



GEORGE WASHINGTON

2015-16 WOMEN'S BASKETBALL NOTES

Media Contact: Jessica Bernheim Schuler | jbernheim@gwu.edu | 202-994-5666 | 410-598-9848
www.GWsports.com | @GW_Sports | @GW_WBB

2015-16 SCHEDULE AND RESULTS

| DAY | DATE | OPPONENT | TIME/RESULT |
|---------------------------------------|---------|----------------------|-------------|
| SUN | NOV. 8 | CHRIS. NEWPORT (Ex.) | W, 95-47 |
| SAT | NOV. 14 | GRAMBLING STATE | W, 85-58 |
| TUE | NOV. 17 | AMERICAN | W, 78-48 |
| Sat | Nov. 21 | at #15/10 Stanford | 3:00 p.m. |
| Mon | Nov. 23 | at Fresno State | 10:00 p.m. |
| Lone Star Showcase, Cedar Park, Texas | | | |
| Thu | Nov. 26 | vs. Houston | 2:30 p.m. |
| Fri | Nov. 27 | vs. Iowa | 2:30 p.m. |
| Sat | Nov. 28 | vs. Wright State | 2:30 p.m. |
| THU | DEC. 3 | FLORIDA GULF COAST | 7:00 PM |
| Sun | Dec. 6 | at Memphis | 2:00 p.m. |
| SUN | DEC. 13 | VILLANOVA | 2:00 PM |
| SUN | DEC. 20 | IONA | 12:00 PM |
| Mon | Dec. 28 | at Illinois | 3:00 p.m. |
| WED | DEC. 30 | HARTFORD | 7:00 PM |
| Sun | Jan. 3 | at Saint Joseph's* | 3:00 p.m. |
| WED | JAN. 6 | RHODE ISLAND* | 12:00 PM |
| Sun | Jan. 10 | at Dayton* | 2:00 p.m. |
| WED | JAN. 13 | LA SALLE* | 7:00 PM |
| Sun | Jan. 17 | at Duquesne* | 12:00 p.m. |
| WED | JAN. 20 | MASSACHUSETTS* | 7:00 PM |
| SAT | JAN. 23 | GEORGE MASON* | 2:00 PM |
| Wed | Jan. 27 | at Davidson* | 7:00 p.m. |
| SUN | JAN. 31 | SAINT LOUIS* | 2:00 PM |
| Wed | Feb. 3 | at Fordham* | 7:00 p.m. |
| Sun | Feb. 7 | at Richmond* | 2:00 p.m. |
| SUN | FEB. 14 | DAYTON* | 12:00 PM |
| Wed | Feb. 17 | at St. Bonaventure* | 7:00 p.m. |
| SAT | FEB. 20 | VCU* | 3:00 PM |
| WED | FEB. 24 | RICHMOND* | 7:00 PM |
| Sat | Feb. 27 | at George Mason* | 2:00 p.m. |

2016 Atlantic 10 Championship Richmond Coliseum, Richmond, Va.

| | | | |
|-----|---------|---------------|----------------------|
| Wed | March 2 | First Round | TBA |
| Thu | March 3 | Second Round | TBA |
| Fri | March 4 | Quarterfinals | TBA |
| Sat | March 5 | Semifinals | 11:00 a.m./1:30 p.m. |
| Sun | March 6 | Championship | 12:00 p.m. |

ALL TIMES EST | * - Atlantic 10 Conference game

JUST GW, THANK YOU

When abbreviating **George Washington University** in reference to athletics programs, please shorten to **GW** only, as opposed to GWU. Thank you.

GW QUICK FACTS

| | |
|--------------------------------------|-------------------------|
| Location | Washington, D.C. |
| Founded | 1821 |
| Enrollment | 25,000 |
| Nickname | Colonials |
| Colors | Buff & Blue |
| Conference | Atlantic 10 |
| Home Court | Charles E. Smith Center |
| Press Row Phone | 202-994-1776 |
| Director of Athletics and Recreation | Patrick Nero |
| First Year of Women's Basketball | 1975-76 |
| Overall All-Time Record | 724-441 (41st yr.) |
| Overall A-10 Record | 337-153 (34th yr.) |
| A-10 Championship Record | 37-28 (33 app.) |
| NCAA Tournament Record | 18-16 (16 app.) |
| WNIT Record | 3-6 (4 app.) |



GW COLONIALS

Coach: Jonathan Tsipis
Record at GW: 68-31
Year at GW: 4th
Career record: 68-31
0-0 vs. Stanford

GAME 3

#22/20 GEORGE WASHINGTON (2-0)

AT

#15/10 STANFORD (2-0)

SATURDAY, NOVEMBER 21, 2015 | 12:00 PM PT

MAPLES PAVILION

STANFORD, CALIF.

TV: none

RADIO: WRGW District Radio

LIVE STATS: via GoStanford.com

LIVE VIDEO: Stanford Live Stream



STANFORD CARDINAL

Coach: Tara VanDerveer
Record at SU: 803-166
Year at SU: 30th
Career record: 955-217
2-0 vs. GW

GW'S PROBABLE STARTERS (based on last game)

| NO. | NAME | YR. | POS. | HT. | PPG | RPG | NOTE |
|-----|------------------|-----|------|-----|------|--------|-----------------------------------|
| 3 | Caira Washington | Jr. | F | 6-2 | 22.0 | 9.5 | A-10 Co-Player of the Week |
| 4 | Lauren Chase | Gr. | G | 5-5 | 3.0 | 4.0apg | 5th in A-10 in assists in 2014-15 |
| 13 | Shannon Cranshaw | Jr. | G | 5-9 | 8.0 | 2.0apg | 5-for-5 3FGs vs. Grambling |
| 25 | Kelli Prange | So. | F | 6-5 | 15.0 | 6.5 | 2015 A-10 All-Rookie Team |
| 35 | Jonquel Jones | Sr. | F | 6-4 | 10.0 | 8.5 | Wooden Award Preseason Top 30 |

RESERVES

| | | | | | | | |
|----|------------------|-----|---|------|-----|-----|--------------------------------------|
| 1 | Kelsi Mahoney | Fr. | F | 6-1 | 1.0 | 1.0 | 2x Carrabuse County (NC) Player/Year |
| 2 | Camila Tapias | So. | G | 5-6 | 0.0 | 0.5 | 14pts, 6-8 FG vs. CNU |
| 5 | Aaliyah Brown | Sr. | G | 5-8 | 2.5 | 1.0 | 11pts, 4 steals vs. CNU |
| 14 | DaLacy Anderson | Sr. | F | 6-1 | 4.5 | 1.5 | 7pts vs. American |
| 15 | Mia Farmer | So. | G | 5-8 | 3.0 | 0.5 | |
| 20 | Hannah Schaible | Jr. | G | 5-9 | -- | -- | 2015 A-10 All-Championship Team |
| 21 | Me-Lyn Bautista | Fr. | G | 5-6 | 5.0 | 1.0 | 3x All-Long Island Team |
| 22 | Jada Matthews | So. | F | 6-0 | 2.0 | 2.0 | |
| 24 | Alexis Chandler | Sr. | G | 5-8 | 2.0 | 6.0 | Career-high 9reb vs. Grambling |
| 34 | Brianna Cummings | So. | G | 5-10 | 6.0 | 3.0 | Team Academic Success Award |

► No. 22/20 GW hits the road for the first time this season, setting out on a 10-day road swing to Northern California and Texas. The Colonials will play five games in eight days on the trip - at Stanford (Nov. 21) and Fresno State (Nov. 23) before heading to Austin, Texas for three games at the Lone Star Showcase Nov. 26-28. GW will take on four 2015 postseason teams, including a pair of Sweet 16 participants (Stanford, Iowa-Nov. 27) and two WNIT qualifiers (Fresno State, Wright State-Nov. 28).

► GW (2-0) routed District rival American, 78-48, on Tuesday evening at the Smith Center. The frontcourt trio of junior **Caira Washington** (21), sophomore **Kelli Prange** (18) and senior **Jonquel Jones** (14) combined for 53 points, and Washington, who connected on 10-of-12 field goal attempts, added 11 rebounds for her first double-double.

► Washington, who was named Atlantic 10 Player of the Week on Monday after scoring 21 points in the season opener against Grambling State, ranks among the top five in the league in scoring (2nd, 22.0 ppg), rebounding (T-4th, 9.5 rpg), field goal percentage (4th, .667) and blocked shots (5th, 2.0 bpg) after two games.

► The nation's top rebounding team last season, GW has picked up where it left off a year ago, ranking seventh in the NCAA in rebounding margin (+22.5) through two contests.

► Jones, the reigning Atlantic 10 Player and Defensive Player of the Year and an honorable mention All-American, was named to the Wooden Award Preseason Top 30 on Tuesday.

► Saturday's game will mark the third-ever game between GW and Stanford, with the Cardinal winning both previous matchups, including a 76-51 decision in the first round of the 2001 NCAA Tournament. The teams' only other previous meeting occurred at the 1991 7-Up Desert Classic in Las Vegas.

► While GW has never played Stanford at Maples Pavilion, one of the Colonials' most memorable games occurred on that court, as sixth-seeded GW stunned third-seeded California, 55-53, in the second round of the 2008 NCAA Tournament. Sarah-Jo Lawrence, now the team's academic advisor, hit the game-winning putback with 5.7 seconds left as the Colonials advanced to the Sweet 16 for the second straight season and fourth overall.

0-2 vs. STANFORD

H: 8-3 A: 4-8 N: 0-1 S: W2

Last Five All-Time Meetings
11/30/91... N!... L, 74-71
3/17/01... N!... L, 76-51
1-7-Up Desert Classic (Las Vegas,
Nev.); 2-NCAA Tournament First
Round (Norman, Okla.)

Avg. Margin of Victory: NA
Avg. Margin of Defeat: 14.0

2015-16 GEORGE WASHINGTON WOMEN'S BASKETBALL TEAM ROSTER & STAFF

| NO. | NAME | YR. | POS. | HT. | HOMETOWN/HIGH SCHOOL/LAST SCHOOL |
|-----|------------------|-----|------|------|---|
| 1 | Kelsi Mahoney | Fr. | F | 6-1 | Concord, N.C./Jay M. Robinson |
| 2 | Camila Tapias | So. | G | 5-6 | Bogotá, Colombia/IMG Academy (Fla.) |
| 3 | Caira Washington | Jr. | F | 6-2 | Brandywine, Md./Georgetown Day School |
| 4 | Lauren Chase | Gr. | G | 5-5 | Bowie, Md./Riverdale Baptist/UMBC |
| 5 | Aaliyah Brown | Sr. | G | 5-8 | League City, Texas/Clear Springs |
| 13 | Shannon Cranshaw | Jr. | G | 5-9 | Ormond Beach, Fla./Father Lopez |
| 14 | DaLacy Anderson | Sr. | F | 6-2 | Bolingbrook, Ill./Bolingbrook |
| 15 | Mia Farmer | So. | G | 5-8 | Philadelphia, Pa./Cardinal O'Hara |
| 20 | Hannah Schaible | Jr. | G | 5-9 | Orlando, Fla./Dr. Phillips |
| 21 | Mei-Lyn Bautista | Fr. | G | 5-6 | Whitestone, N.Y./Saint Mary's |
| 22 | Jada Matthews | So. | F | 6-0 | Sicklerville, N.J./Winslow Township |
| 24 | Alexis Chandler | Sr. | G | 5-9 | Cypress, Texas/Cy-Fair |
| 25 | Kelli Prange | So. | F | 6-5 | Damascus, Md./Damascus |
| 34 | Brianna Cummings | So. | G | 5-10 | Lawrenceville, Ga./Greater Atlanta Christian |
| 35 | Jonquel Jones | Sr. | F | 6-4 | Freeport, Bahamas/Riverdale Baptist (Md.)/Clemson |

HEAD COACH JONATHAN TSIPIS

4th year at GW, overall
(68-31, .687)
North Carolina '96

| YEAR | OVRL | A-10 | NOTE |
|--------------|--------------|--------------|------------------|
| 2012-13 | 14-16 | 7-7 | First Season |
| 2013-14 | 23-11 | 11-5 | WNIT Third Round |
| 2014-15 | 29-5 | 15-1 | A-10 Champs |
| 2015-16 | 2-0 | -- | |
| TOTAL | 68-31 | 33-13 | |

2008-12 - Associate Head Coach, Notre Dame

2003-08 - Assistant Coach, Notre Dame
228-77 record, 9 NCAA Tournaments, 5 Sweet 16s, back-to-back National Championship games (2011, 2012)

2002-03 - Dir./MBB Operations, UNC Greensboro

2000-02 - Assistant MBB Coach, Elon

1999-00 - Assistant MBB Coach, LeMoyne

OF NOTE: Tsipis has worked under three national championship coaches - Notre Dame's Muffet McGraw, Duke's Mike Krzyzewski and LeMoyne's Dave Paulsen (now at George Mason)...Tsipis' father, Lou, played for the Greek National Team and is a member of the Hellenic Sports Hall of Fame.

ASSISTANT COACHES

Diane Richardson
Frostburg State '80 - 4th year
Melissa Dunne
Temple '02 - 2nd year
Zach Kancher
George Washington '03 - 1st year

DIRECTOR OF OPERATIONS

Jillian Baach
Florida '14 - 2nd year

Asst. Director of Operations

Ryan Phillips
Guilford '14 - 2nd year

STRENGTH & CONDITIONING COACH

Brandi Walker

TEAM ATHLETIC TRAINER

Deborah Yenser

PRONUNCIATION GUIDE

Mei-Lyn BautistaMAY LINN BOU-tee-sta
Brianna Cummings: bree-anna
Melissa Dunne:DUN
Jonquel Jones jon-KWELL
Kelli Prange: PRANG-ee
Hannah Schaible: SHY-blee
Camila Tapias ca-MEE-lah TAH-pee-ahs
Jonathan Tsipis:SIP-iss
Caira Washington:KYE-rah



When Jonathan Tsipis was named head coach of the George Washington women's basketball team in April 2012, he was tasked with re-establishing the Colonials as a national power and the most dominant team in the Atlantic 10 Conference. Just three years later, Coach Tsipis has done just that.

In 2015, Coach Tsipis was voted Atlantic 10 Coach of the Year as he led GW to a 29-4 overall record - setting a program record for wins and winning percentage - an Atlantic 10 regular-season title with a 15-1 league mark, an A-10 championship and its first berth in the NCAA Tournament since 2008. The Colonials, who won both the regular-season and tournament crowns for the first time since 2003, became the first No. 1 seed to win the A-10 tournament since Xavier in 2011. GW won 19 straight games during an 11-week span that stretched from before Thanksgiving to nearly Valentine's Day and included victories over N.C. State and Purdue in the Bahamas en route to a championship at the Junkanoo Jam. It matched the second-longest streak in program history and jettisoned the Colonials into the national rankings, where they remained for the final 10 weeks of the season and peaked at No. 19. The Colonials established themselves as the top rebounding team in the nation, leading all of Division I with a +13.8 rebounding margin behind A-10 Player and Defensive Player of the Year Jonquel Jones, whose 375 rebounds shattered GW's previous single-season record, which had stood for more than two decades. Jones, who was just the fourth

player in conference history to win both Player and Defensive Player of the Year, became the first Colonial to earn All-America honors since 2008 when she garnered honorable mention from both the Associated Press and WBCA. The junior was also one of 30 midseason candidates for the prestigious Naismith Trophy, which is given to the national player of the year.

GW's quick turnaround began almost immediately upon Coach Tsipis' hiring. In his first season at the helm, he guided the Colonials to their first A-10 Championship victory since 2008 and their most overall (14) and conference wins (7) since 2009. In Year Two, Coach Tsipis and the Colonials took it a step farther. In the second game of the 2013-14 season, GW knocked off No. 10/11 California, a 2013 Final Four participant, at the Smith Center - a sign of things to come. The Colonials would tie for second place in the Atlantic 10 standings with an 11-5 conference record after defeating their second ranked opponent of the season, No. 21 Dayton, on Senior Day, earning a bye through to the quarterfinals of the A-10 Championship, where they beat defending champ Saint Joseph's to advance to the semifinals for the first time since 2008. GW earned a bid to the WNIT, making its first postseason appearance since 2009, and reached the third round after defeating East Carolina and Villanova for its first postseason victories since 2008. The Colonials finished the season with a 23-11 overall mark, a nine-win improvement from the previous season and their most overall wins since the 2007-08 campaign. For his efforts, Coach Tsipis was awarded a contract extension through the 2020-21 season. The Colonials also established themselves as one of the top offensive teams in not just the Atlantic 10 but in all of Division I in 2013-14, ranking second in the league and 35th in the nation, averaging 76.1 points per game - a 17.2 point-per-game improvement from the previous season. The squad scored 100 points in three different games - the first team in program history to reach the century mark multiple times in one season. Four Colonials earned Atlantic 10 postseason honors, headlined by freshman Caira Washington, who was named A-10 Rookie of the Year.

Coach Tsipis [SIP-iss] came to GW just three days after sitting on the sidelines in Denver as Notre Dame took on Baylor in its second straight NCAA title game. Tsipis spent nine seasons on the coaching staff at the University of Notre Dame, including his last four years as associate head coach and recruiting coordinator. In all, the Fighting Irish enjoyed a 228-77 (.748) mark with Coach Tsipis on the sidelines. In his nine seasons at Notre Dame, Coach Tsipis helped Hall of Fame Coach Muffet McGraw reach the NCAA Tournament each season, including five Sweet Sixteen appearances, four of which came in his last five years in South Bend. As the coordinator of Notre Dame's nationally ranked recruiting efforts, his work landed the Fighting Irish one of the nation's top-20 recruiting classes in each of his nine years and a top-10 class three of his last four seasons, and Notre Dame's Class of 2014 graduated as the most successful senior class in program history. Additionally, his expertise was relied on to coordinate Notre Dame's game plans, player development, scheduling and practice planning.

One of CollegeInsider.com's Top 10 assistant coaches in the nation, and a former recipient of BasketballScoop.com's Assistant Coach of the Year Award (five recipients each season), Tsipis has mentored four All-Americans, eight WNBA Draft picks, including five first-round selections, a BIG EAST Conference Player of the Year, three players who earned invitations to the USA Basketball National Team trials and a First Team Academic All-American. Coach Tsipis' student-athletes have excelled academically as well, as 100 percent of his players at Notre Dame who used their four years of eligibility graduated, ranking the Irish tops in the country in Graduation Success Rate. Coach Tsipis was responsible for building the game plan in close to three dozen Notre Dame wins over nationally ranked opponents (six versus UConn), including the Irish's win against Connecticut in 2005 that snapped the Huskies' 112-game home win streak in regular-season league games. He also designed the game plan in Notre Dame's 2011 NCAA Women's Final Four victory when the Fighting Irish became the first UConn opponent in more than seven years to shoot better than 50 percent from the floor.

Tsipis went to Notre Dame following one season as the director of men's basketball operations at the University of North Carolina-Greensboro, where he worked under Fran McCaffery, who now is the head men's basketball coach at the University of Iowa. Prior to arriving at UNC Greensboro, Coach Tsipis spent two seasons as an assistant men's coach at Elon (N.C.) University after one year as the top men's assistant coach at Le Moyne College in Syracuse, N.Y. He also spent three seasons on the men's basketball staff at Cornell University and one year on the men's basketball staff at Duke, where he served as an undergraduate assistant under legendary Blue Devils head coach Mike Krzyzewski. All told, Tsipis has worked under three national championship coaches - Notre Dame's McGraw, Duke's Krzyzewski and Le Moyne's Dave Paulsen, who is now the head coach at Bucknell University.

The North Carolina graduate hails from a family with strong roots in basketball, as his father, Lou, played for the Greek National Team and had a standout career at Baldwin-Wallace College before playing professionally in Greece. A member of both the Naismith Memorial Basketball Hall of Fame and Hellenic Sports Hall of Fame, Tsipis' father also coached at the high school and collegiate levels for more than 20 years. Tsipis' brother, Dean, played basketball at Case Western Reserve University, while his sister, LuAnn Damiris, was a three-sport letterwinner at Baldwin-Wallace, and his niece, Amanda Tsipis, played basketball at Notre Dame while her uncle was on the sidelines.

GW'S 2015-16 RECORD...

| | |
|---|-----|
| When GW scores first | 2-0 |
| When opponent scores first | 0-0 |
| When leading at halftime | 2-0 |
| When trailing at halftime | 0-0 |
| When tied at halftime | 0-0 |
| When leading with 5:00 left in second half | 2-0 |
| When trailing with 5:00 left in second half | 0-0 |
| When tied with 5:00 left in second half | 0-0 |
| In November | 2-0 |
| In December | 0-0 |
| In January | 0-0 |
| In February | 0-0 |
| In March | 0-0 |
| On Sunday | 0-0 |
| On Monday | 0-0 |
| On Tuesday | 1-0 |
| On Wednesday | 0-0 |
| On Thursday | 0-0 |
| On Friday | 0-0 |
| On Saturday | 1-0 |
| When GW shoots below 35% | 0-0 |
| When GW shoots between 35-40% | 0-0 |
| When GW shoots between 40-45% | 0-0 |
| When GW shoots over 45% | 2-0 |
| When opponent shoots below 35% | 1-0 |
| When opponent shoots between 35-40% | 1-0 |
| When opponent shoots between 40-45% | 0-0 |
| When opponent shoots over 45% | 0-0 |
| When GW scores fewer than 50 points | 0-0 |
| When GW scores 50-59 points | 0-0 |
| When GW scores 60-69 points | 0-0 |
| When GW scores 70-79 points | 1-0 |
| When GW scores 80+ points | 1-0 |
| When GW holds opponent under 50 points | 1-0 |
| When GW allows 50-59 points | 1-0 |
| When GW allows 60-69 points | 0-0 |
| When GW allows 70+ points | 0-0 |
| In games decided by five points or less | 0-0 |
| In overtime | 0-0 |
| When outrebounding an opponent | 2-0 |
| When outrebounded by an opponent | 0-0 |
| When rebounds are even | 0-0 |
| vs. Atlantic 10 Opponents | 0-0 |
| vs. Non-Conference Opponents | 2-0 |
| vs. SWAC (Grambling State) | 1-0 |
| vs. Patriot League (American) | 1-0 |
| At Charles E. Smith Center | 2-0 |
| On the road | 0-0 |
| At neutral site | 0-0 |
| vs. Top 25 ranked teams | 0-0 |
| as a Top 25 ranked team | 2-0 |
| vs. teams with winning records | 0-0 |
| vs. .500 teams | 1-0 |
| vs. teams with losing records | 1-0 |
| When GW is coming off a win | 1-0 |
| When GW is coming off a loss | 0-0 |
| Longest GW win streak | 2 |
| Longest GW losing streak | 0 |
| Largest lead 33 pts vs. Grambling State, 4:43 3rd qtr | |
| Largest deficit | N/A |
| Largest deficit overcome | N/A |
| Largest halftime lead . . . 23 pts vs. Grambling State (49-26) | |

SCOUTING THE CARDINAL

► Stanford (2-0) is coming off a 65-48 win at Gonzaga on Sunday. **Erica McCall** posted a double-double with 23 points and 13 rebounds, while **Lili Thompson** poured in 21 points off the bench. The game was tied at halftime, but the Cardinal pulled away with a 24-10 fourth quarter.

► McCall leads Stanford with 16.5 points and 12.0 rebounds through two games this season after averaging just 5.6 points and 5.4 rebounds per game last season.

► Thompson, a 2015 All-Pac 12 selection, has averaged 15.5 points per game in two contests.

► Stanford has allowed just 46.5 points per game through two games this season.

► The defending Pac-12 champion, the Cardinal reached its eighth consecutive Sweet 16 last March and was picked to finish second in the Pac-12.

FOR STARTERS

► GW is 2-0 for the first time since 2013. The Colonials have not been 3-0 to start the season since the 2007-08 campaign.

POSTAL SERVICE

► GW's starting frontcourt of senior **Jonquel Jones**, junior **Caira Washington** and sophomore **Kelli Prange** combined for 53 points and 24 rebounds in GW's 78-48 win over American on Tuesday night. The trio has combined to average 47.0 points and 24.5 rebounds over the first two games this season.

EN FUEGO

► Junior **Caira Washington** is off to a hot start, averaging 22.0 points on 66.7 percent shooting (20-for-30) to go with 9.5 rebounds and 2.0 blocks per game. She ranks in the top five in the Atlantic 10 in all four categories.

► After scoring 23 points on 10-of-18 shooting plus eight rebounds against Grambling State in the season opener, Washington posted her first double-double of the season with 19 points and 11 rebounds, connecting on 10-of-12 shots.

WOODEN WATCH

► Senior **Jonquel Jones** was named to the John R. Wooden Award Women's Preseason Top 30 on Tuesday. Jones is the only player not from the ACC, Big Ten, Big 12, SEC, Pac-12 or American Athletic conferences to be named to the list for the most prestigious award in college basketball.

HONOR ROLL

► Junior **Caira Washington** was named Atlantic 10 Co-Player of the Week for the first week of

TALE OF THE TAPE


| GW | CATEGORY | STAN |
|--------|----------------|--------|
| 2-0 | Record | 2-0 |
| 81.5 ✓ | PPG | 69.5 |
| 53.0 | PPG Allowed | ✓ 46.5 |
| 28.5 ✓ | Scoring Margin | 23.0 |
| .485 ✓ | FG% | .391 |
| .367 | FG% Defense | ✓ .274 |
| .395 ✓ | 3FG% | .333 |
| .158 ✓ | 3FG% Defense | .190 |
| .611 ✓ | FT% | .578 |
| 49.5 ✓ | RPG | 45.0 |
| 22.5 ✓ | Rebound Margin | 0.5 |
| 17.0 ✓ | APG | 14.0 |
| 19.0 | TO PG | ✓ 11.0 |
| 4.5 | BPG | ✓ 7.0 |
| 8.5 ✓ | SPG | 7.0 |
| NA | RPI | NA |
| 2-0 | Last 10 Games | 2-0 |
| W2 | Streak | W2 |

the season on Monday. Washington led GW with a game-high 23 points plus eight rebounds and three blocks in the season opener against Grambling State. She made 10-of-18 shots from the floor, and seven of her rebounds came on the offensive end. Washington scored 20 of her 23 points in the first half, including 14 in the opening quarter, as GW built a 49-26 halftime lead.

THREE'S COMPANY

► Junior **Shannon Cranshaw** connected on all five of her attempts from beyond the arc last Saturday against Grambling State, matching the second-best perfect game in program history; Antelia Parrish also went 5-for-5 from long distance on Jan. 6, 2008, against Brown. GW Athletic Hall of famer Jennifer Shasky holds the program record by going 7-for-7 from 3-point prange against Penn State in 1991.

► GW hit 10-of-20 from beyond the arc in the contest, the Colonials' most 3-pointers in a game since Feb. 18, 2009, against Massachusetts.

HOME SWEET HOME

► GW has won 15 straight games at the Charles E. Smith Center dating to Nov. 24, 2014, tied with Notre Dame, Quinnipiac and South Dakota for the ninth-longest home winning streak in the nation. The Colonials went 14-1 at the Smith Center last season after going 15-3 at home in 2013-14. Since head coach **Jonathan Tsipis** took the reins in 2012-13, GW is 37-8 on Tex Silverman Court.

A LOOK BACK

► GW went 29-4 overall in 2014-15, setting a program record for victories, and finished 15-1 in Atlantic 10 play to win its 14th regular-season title. The Colonials then downed Saint Louis,



ATLANTIC 10 CONFERENCE

► The Atlantic 10 relocated its conference headquarters from Philadelphia, PA, to Newport News, VA, in 2009.

► **Tom Waterman** is the A-10's women's basketball media contact. He can be reached at twaterman@atlantic10.org OR 757-706-3041 (office).

► The Atlantic 10 sent five programs to postseason play in 2015, including two (GW, Dayton) to the NCAA Tournament and three (Duquesne, Fordham, Richmond) to the WNIT.

► For the third year in a row, the 2015 Atlantic 10 Championship will take place at the Richmond Coliseum in Richmond, Va., March 2-6.

2014-15 A-10 Predicted Order of Finish

Team - Points (First Place Votes)

| | |
|--------------------------|------------------------|
| 1. Dayton (14) - 196 | 8. La Salle - 97 |
| 2. GW - 173 | 9. Saint Louis - 90 |
| 3. Saint Joseph's - 156 | 10. VCU - 97 |
| 4. St. Bonaventure - 153 | 11. George Mason - 54 |
| 5. Fordham - 143 | 12. Davidson - 42 |
| 6. Richmond - 104 | 13. Rhode Island - 39 |
| 7. Duquesne - 103 | 14. Massachusetts - 24 |

2015-16 ATLANTIC 10 STANDINGS

| School | 11/18 | | | Overall | | |
|-----------------------------|-------|---|-----|---------|---|-------|
| | W | L | PCT | W | L | PCT |
| 1. George Washington | 0 | 0 | -- | 2 | 0 | 1.000 |
| Dayton | 0 | 0 | -- | 2 | 0 | 1.000 |
| Richmond | 0 | 0 | -- | 2 | 0 | 1.000 |
| Saint Louis | 0 | 0 | -- | 2 | 0 | 1.000 |
| VCU | 0 | 0 | -- | 2 | 0 | 1.000 |
| 6. Davidson | 0 | 0 | -- | 1 | 1 | .500 |
| Duquesne | 0 | 0 | -- | 1 | 1 | .500 |
| Fordham | 0 | 0 | -- | 1 | 1 | .500 |
| Massachusetts | 0 | 0 | -- | 1 | 1 | .500 |
| St. Bonaventure | 0 | 0 | -- | 1 | 1 | .500 |
| 11. George Mason | 0 | 0 | -- | 1 | 2 | .333 |
| Saint Joseph's | 0 | 0 | -- | 0 | 1 | .000 |
| La Salle | 0 | 0 | -- | 0 | 2 | .000 |
| Rhode Island | 0 | 0 | -- | 0 | 2 | .000 |

THIS IS GW

The main campus of The George Washington University is located just four blocks from the White House in the northwest quadrant of Washington, DC, in the historic Foggy Bottom neighborhood. The western border of campus is a couple of blocks from the Kennedy Center and the Watergate complex. The U.S. State Department is GW's next-door neighbor to the south. There are a total of 25,000 students enrolled at GW, the majority of whom are graduate students pursuing advanced degrees. Prominent alumni include the late Red Auerbach and Jacqueline Kennedy Onassis, and Colin Powell.



Follow Coach Tsipis on Twitter!
@GWCoachTsipis

LAST TIME THEY MET - STANFORD 76, GW 51 (3/17/01)

NORMAN, Okla. (AP) - Nicole Powell scored 16 of her 19 points in the first half when Stanford took control on its way to a 76-51 victory over George Washington in the first round of the NCAA West regional Saturday night.

Stanford (19-10), the No. 10 seed, will play seventh-ranked and second-seeded Oklahoma in the second round Monday night. Oklahoma beat Oral Roberts 70-64 in the early game.

George Washington, which had won eight straight NCAA first-round games, winds up 22-10.

The Colonials were no match for the much taller Stanford team. The Cardinal did make seven 3-pointers, but also scored almost at will inside.

Cori Enghusen, who finished with 14, scored four points in a 6-0 run that gave Stanford a 23-19 lead. The Colonials pulled within 25-23 with just under four minutes left before Stanford outscored them 13-2. Powell, Lauren St. Clair and Lindsey Yamasaki all had 3-pointers during the run.

Stanford started the second half with a 12-4 run. The margin was 15 with 12 1/2 minutes remaining before a 16-4 run made the final seven minutes incidental.

Stanford shot 56 percent from the field, compared with just 26.5 percent for George Washington. The Colonials were 3-of-23 from 3-point range.

Corrin Reid scored 11 points and Erica Lawrence and Kristeena Alexander 10 each for George Washington.

Fordham and Dayton in the A-10 Championship to win their fifth league crown and first since 2003 while earning their first NCAA Tournament berth since 2008.

► GW, which won 19 straight games from Nov. 24-Feb. 8 and 27-of-28 before a season-ending loss to Gonzaga in the first round of the NCAA Tournament, spent 10 weeks in the top 25, peaking at No. 19. The Colonials' 19-game win streak matched the second-longest in program history.

GREAT EXPECTATIONS

► GW was picked to repeat as Atlantic 10 champions according to a vote of the conference's 14 head coaches. It marks the first time GW has been selected as the preseason favorite since 2007 following a trip to the Sweet 16.

► The Colonials are ranked No. 22 in this week's Associated Press Poll and No. 20 in the USA Today Coaches Poll. GW opened the season ranked for the first time since the start of the 2007-08 campaign, when they were slotted 13th.

WELCOME BACK

► GW returns 13-of-14 players from the 2015 Atlantic 10 Championship squad, including 4-of-5 starters. The returning players accounted for more than 90 percent of the Colonials' scoring and nearly 95 percent of the team's rebounding last season.

PRESEASON HONOR ROLL

► Senior **Jonquel Jones** and junior **Caira Washington** were both selected to the Atlantic 10 Preseason All-Conference First Team, while Jones also earned a spot on the Preseason All-Defensive Team. Both players were also tabbed Preseason All-Americans by Sporting News.

► The 2015 A-10 Player and Defensive Player of the Year - just the fourth player in conference history to win both awards in the same season - Jones averaged 15.3 points and 12.5 rebounds per game last season as the only player in the conference to average a double-double. She led the league and ranked sixth nationally in rebounding while finishing sixth in the conference in scoring. Jones also posted a league-best 20

double-doubles, 10th-most in the NCAA. A seven-time A-10 Player of the Week in 2014-15 and the Most Outstanding Player of the 2015 A-10 Championship, Jones was named an All-America honorable mention by both the Associated Press and Women's Basketball Coaches Association (WBCA), and she was one of 30 midseason candidates for the prestigious Naismith Trophy.

► Washington averaged 12.2 points and 7.7 rebounds per game last season, earning A-10 All-Conference First Team honors a year after being named the league's Rookie of the Year. Washington ranked fifth in the conference in field goal percentage (.509), sixth in rebounding and 17th in scoring. Also an A-10 Championship All-Tournament Team selection, Washington was among 54 players who accepted invitations to attend the 2015 USA Basketball National Team Trials last spring.

STRENGTH OF SCHEDULE

► GW will face seven postseason teams from a year ago in their first 10 games of 2015-16, including four teams that advanced to the NCAA Tournament (American, Stanford, Iowa, Florida Gulf Coast) and three that participated in the WNIT (Fresno State, Wright State, Villanova).

► The Colonials will also take on NCAA Elite Eight participant Dayton twice, as well as WNIT qualifiers Duquesne, Fordham and Richmond (twice) during Atlantic 10 Conference play to give the Buff and Blue 13 games against 2015 postseason teams.

ROAD WARRIORS

► In a season in which the Colonials achieved a No. 14 RPI in the country in 2014-15, they did so on the strength of a combined 15-2 record in road and neutral site games, including a win at Dayton which ended the country's longest home winning streak at the time (31 games), neutral site wins against N.C. State and Purdue, and a sweep at the A-10 Championship by double-digit margins each game. GW's lone out-of-conference road loss came at Florida Gulf Coast (RPI 18) in the season opener.

TURN THE BEAT AROUND

► Fourth-year head coach **Jonathan Tsipis** has overseen a rapid turnaround, returning a once-struggling GW program to the top of the A-10. The Colonials went 11-18 overall and 4-10 in A-10 play in 2012, the final season before Coach Tsipis took the reins; in the last three years, GW has won 14, 23 and 29 games, respectively, going from 10th in the league in 2012 to seventh in 2013 and then to second last year before winning the regular-season title in 2015. For his efforts, Coach Tsipis was named the 2015 Atlantic 10 Coach of the Year.

BOARD GAMES

► GW led the nation in rebounding margin in 2014-15, outrebounding opponents by an average of 13.8 per game. National champion Connecticut finished second at +12.3 rpg. GW won the battle of the boards in 31-of-33 games, including by 20 or more nine times, and were never outrebounded by more than two. Unofficially, GW also led the nation with 47.7 rebounds per game, ahead of second-place Idaho at 45.8 rpg. Rebounding average is not an official statistic kept by the NCAA.

► Senior **Jonquel Jones**, who led the A-10 and ranked sixth nationally with 12.5 rebounds per game last season, set the program's single-season record with 375 rebounds in 2014-15, shattering GW Hall of Famer Darlene Saar's previous mark of 346, which was set in 1992-93.

► Jones is tied with Gloria Murphy ('88) for 14th all-time at GW with 642 rebounds as a Colonial, and she has 722 in her career, with the first 80 coming at Clemson before she transferred.

► Junior **Caira Washington** ranks 16th on GW's all-time list with 586 career rebounds.

BLOCK PARTY

► Senior **Jonquel Jones** is tied with Carol Byrd ('82) for eighth all-time at GW with 104 blocks as a Colonial, one behind Joan Nowotny ('80) in seventh and six behind Tara Booker ('13) in sixth.

► Jones has 121 blocks in her career, with the first 17 coming at Clemson before transferring.

NEW KIDS ON THE COURT

The Colonials welcome a pair of freshmen to Foggy Bottom this season:

► **Mei-Lyn Bautista** is a 5-6 point guard from Whitestone, N.Y. A three-time All-Long Island selection by Newsday, Bautista averaged 16 points, 12 assists and seven steals per game as a senior and led Saint Mary's to back-to-back Nassau Suffolk Catholic High School Girls Athletic Association titles and state semifinals in 2014 and 2015.

► **Kelsi Mahoney** is a 6-1 forward from Concord, N.C. A two-time Carrabuss County Player of the Year in 2014 and 2015, Mahoney also earned conference player of the year honors as a senior after averaging 15.5 points, 9.1 rebounds, 2.6 blocks and 2.2 steals per game. A McDonald's All-America nominee, she finished her high school career as Jay M. Robinson's second-leading all-time scorer (1,317 points) to go with 985 rebounds and 250 blocks.

FUTURE FACES

Head coach **Jonathan Tsipis**' fourth recruiting class on Wednesday. The trio comprises the No. 2 recruiting class in the Atlantic 10 according to Blue Star Report, which also ranks the group as an honorable mention in its national top 50.

► **Haper Birdsong** is a 5-10 shooting guard from Suffolk, Virginia, who led her Nansemond-Suffolk Academy team to back-to-back Tidewater Conference of Independent Schools (TCIS) regular-season titles and a tournament championship in 2014. A two-time Virginia Independent Schools Athletic Association (VISAA) DII State Player of the Year, Birdsong was also named the 2015 TCIS Player of the Year after averaging 19.2 points, 5.8 rebounds and 3.7 assists per game as a junior.

► **Kendall Bresee** is a 5-11 wing from Urbana, Maryland, who led her Urbana High School squad to the regional title and Maryland 3A state finals in 2015, when she averaged 20.1 points, 9.7 rebounds, 3.0 assists and 2.0 steals per game. Bresee was named the Frederick News-Post Player of the Year as a junior after being tabbed to the newspaper's All-Area Second Team the previous season.

► **Kendra Van Leeuwen** is a 5-9 combo guard from Brantford, Ontario, Canada, who has led her St. John's College team to four straight city and regional titles. She was named her school's Junior Athlete of the Year as a freshman and sophomore before earning its Senior Athlete of the Year award last season, and she is a four-time team MVP. Van Leeuwen has also played for the Canadian Junior National Team at the 2014 U-17 FIBA World Championships.

AGAINST THE PAC-12 (9-7)

► GW is 9-7 all-time against current members of the Pac-12 but has not played any team more than three times (UCLA, Cal). GW's last game against a Pac-12 member occurred on Nov. 15, 2013, a 75-72 win over No. 10/11 California at the Charles E. Smith Center. The Colonials have never faced Oregon State, Utah or Washington.

| SCHOOL | OVERALL | H | A | N | Strk |
|------------------|---------|-----|-----|-----|------|
| Arizona | 1-0 | 0-0 | 0-0 | 1-0 | W1 |
| Arizona State | 1-0 | 0-0 | 0-0 | 1-0 | W1 |
| California | 2-1 | 1-0 | 0-1 | 1-0 | W1 |
| Colorado | 0-2 | 0-0 | 0-1 | 0-1 | L2 |
| Oregon | 1-1 | 1-0 | 0-0 | 0-1 | L1 |
| Stanford | 0-2 | 0-0 | 0-0 | 0-2 | L2 |
| UCLA | 3-0 | 1-0 | 1-0 | 1-0 | W3 |
| USC | 0-1 | 0-0 | 0-1 | 0-0 | L1 |
| Washington State | 1-0 | 0-0 | 0-0 | 1-0 | W1 |

GROUNDING THE FLYERS

► When the Colonials defeated Dayton, 69-66, on Jan. 4, they ended the nation's longest home winning streak. The Flyers - an eventual NCAA Elite Eight participant - had won 31 straight games at UD Arena dating to Feb. 18, 2012. After beating Dayton again on Feb. 8, the Colonials became the only team to defeat the Flyers three times since the 2011-12 season; GW also beat Dayton, 88-79, on Senior Day in 2014.

JUNKANOO JAMMIN'

► GW knocked off N.C. State and Purdue - both 2014 NCAA Tournament teams who were receiving votes in the national polls - en route to the Junkanoo Jam Freeport Division last Thanksgiving in Freeport, Bahamas. The Colonials beat the Wolfpack, 74-66, in the opening game before routing the Boilermakers, 79-59, for the title.

► **Jonquel Jones**, a native of Freeport, was fittingly named the tournament MVP after averaging 18.0 points and 11.5 rebounds in the two wins in front of her friends and family. Senior **Chakecia Miller** tallied 12.5 points, 4.5 assists and 3.0 steals per contest and joined Jones on the All-Tournament Team.

BAHAMA MAMA

► A native of Freeport, Bahamas, **Jonquel Jones** is believed to be just the third Bahamian girls' basketball player ever to earn a Division I scholarship straight out of high school, following Yolett McPhee-McCuin (Florida Atlantic/Rhode Island) and Waltiea Rolle (UNC).

► Jones played for the Bahamian national team in the summer of 2014, leading her squad to fifth place at the Caribbean Basketball Confederation (CBC) Senior Championship for Women Tortola, British Virgin Islands, in July. Jones averaged a tournament-best 14.0 rebounds per game and was second with 17.2 points per contest.

► Jones had the opportunity to play two games in front of her family and friends in Freeport over Thanksgiving at the Junkanoo Jam.

BUFF AND BLUE DEBUT

► Sophomore **Kelli Prange** had quite the collegiate debut at Florida Gulf Coast last November. The then-rookie posted a double-double of 24 points and 12 rebounds in her first-ever game, making nine of her first 11 shots and finishing 9-for-14 on the evening, including 2-for-5 from behind the arc.

HANNAH JOE MONTANA

► Junior **Hannah Schaible** was an accomplished quarterback of her Dr. Phillips High School flag football team. The three-time Orlando Sentinel Central Florida Flag Football Player of the Year and the Florida Dairy Farmers' 2011 Miss Flag Football, Schaible led the Panthers to a state title in 2011 and back to the state finals the following season.

HISTORY LESSON

GW boasts one of the nation's best track records since 1990:

- 19 postseason appearances
- 15 NCAA Tournament appearances
- Four NCAA Sweet 16's (1995, 1997, 2007, 2008)
- One NCAA Elite Eight appearance (1997)
- Four Postseason WNIT appearances
- 13 Atlantic 10 regular-season titles
- Four Atlantic 10 Championships
- 19 20-win seasons

2015-16 GW INDIVIDUAL STAT RANKS

| Category/Player | A-10 (Avg.) | Conf. Only | NCAA |
|--|---------------|------------|-------|
| Scoring | | | |
| Caira Washington | 2nd (22.0) | NA | 31st |
| Kelli Prange | 9th (15.0) | NA | NA |
| Rebounds | | | |
| Caira Washington | T-4th (9.5) | NA | 95th |
| Jonquel Jones | T-8th (8.5) | NA | 161st |
| Kelli Prange | T-16th (6.5) | NA | NA |
| Field Goal Percentage | | | |
| Caira Washington | 4th (.667) | NA | 32nd |
| Kelli Prange | 10th (.579) | NA | 119th |
| Assists | | | |
| Lauren Chase | T-10th (4.0) | NA | 176th |
| Free Throw Percentage | | | |
| Jonquel Jones | T-12th (.833) | NA | 177th |
| Steals | | | |
| Lauren Chase | T-8th (2.0) | NA | NA |
| Brianna Cummings | T-14th (1.5) | NA | NA |
| Shannon Cranshaw | T-14th (1.5) | NA | NA |
| Three-Point Field Goal Percentage | | | |
| Shannon Cranshaw | 3rd (.625) | NA | 35th |
| Kelli Prange | T-7th (.500) | NA | NA |
| Mia Farmer | T-14th (.400) | NA | NA |
| Three-Pointers Made Per Game | | | |
| Shannon Cranshaw | T-4th (2.5) | NA | 139th |
| Jonquel Jones | T-12th (1.5) | NA | NA |
| Blocked Shots | | | |
| Caira Washington | 5th (2.0) | NA | 86th |
| Kelli Prange | T-8th (1.0) | NA | NA |
| Jonquel Jones | T-8th (1.0) | NA | NA |
| Offensive Rebounds | | | |
| Caira Washington | 1st (5.0) | NA | NA |
| Alexis Chandler | T-14th (2.5) | NA | NA |
| Defensive Rebounds | | | |
| Jonquel Jones | T-5th (6.5) | NA | NA |
| Double-Doubles | | | |
| Caira Washington | T-1st (1) | NA | 45th |

2015-16 A-10/NCAA RANKINGS

| Category | A-10 (14) | Conf. Only | NCAA (343) |
|-----------------------|---------------|------------|------------|
| Scoring Offense | 1st (81.5) | NA | 50th |
| Scoring Defense | 2nd (53.0) | NA | 60th |
| Scoring Margin | 1st (28.5) | NA | 30th |
| Free Throw % | 12th (.611) | NA | 261st |
| Field Goal % | 1st (.485) | NA | 29th |
| FG% Defense | 7th (.367) | NA | 130th |
| 3-Point FG % | 3rd (.395) | NA | 46th |
| 3FG% Defense | 1st (.158) | NA | 14th |
| 3-Point FG Made | 2nd (7.5) | NA | 77th |
| Rebounding Offense | 1st (49.5) | NA | NA |
| Rebounding Defense | 1st (27.0) | NA | NA |
| Rebounding Margin | 1st (22.5) | NA | 7th |
| Blocked Shots | T-2nd (4.5) | NA | 97th |
| Assists | T-3rd (17.0) | NA | 56th |
| Steals | 2nd (8.5) | NA | 159th |
| Turnover Margin | T-7th (-1.0) | NA | 216th |
| Assist/Turnover Ratio | 6th (0.9) | NA | 133rd |
| Offensive Rebounds | 2nd (17.0) | NA | NA |
| Defensive Rebounds | 1st (32.5) | NA | 25th |
| Personal Fouls | 1st (14.5) | NA | 32nd |
| Turnovers | 11th (19.0) | NA | 237th |
| Won-Loss Pct. | T-1st (1.000) | NA | T-1st |

*A-10 Stats as of 11/18
 **NCAA Stats as of 11/19

DOUBLE DOWN

| PLAYER | '15-16 | '14-15 | '13-14 | '12-13 | '11-12 | Career |
|-----------------------|--------|--------|--------|--------|--------|--------|
| Double-Doubles | | | | | | |
| Jonquel Jones | 0 | 20 | 12 | 4 | - | 36 |
| Caira Washington | 1 | 6 | 12 | - | - | 19 |
| Hannah Schaible | - | 2 | 3 | - | - | 6 |
| Lauren Chase | 0 | 0 | - | 1 | 2 | 3 |
| Brianna Cummings | 0 | 1 | - | - | - | 1 |
| Kelli Prange | 0 | 1 | - | - | - | 1 |
| 20-Point Games | | | | | | |
| Jonquel Jones | 0 | 6 | 7 | 0 | - | 13 |
| Caira Washington | 2 | 4 | 3 | - | - | 9 |
| Kelli Prange | 0 | 2 | - | - | - | 2 |
| Lauren Chase | 0 | 1 | - | 1 | 0 | 2 |
| Alexis Chandler | 0 | 0 | 1 | 0 | - | 1 |

2015-16 INDIVIDUAL SUPERLATIVES

| GW HIGH | OPPONENT HIGH |
|---|--|
| POINTS.....23, Caira Washington vs. Grambling State (11/14/15) | 21, Yosha Watson, Grambling State (11/14/15) |
| FIELD GOALS.....10, 2x, Last by Caira Washington vs. American (11/17/15) | 10, Yosha Watson, Grambling State (11/14/15) |
| FIELD GOALS ATT.....18, Caira Washington vs. Grambling State (11/14/15) | 16, Yosha Watson, Grambling State (11/14/15) |
| FG PCT. (min. 5 made).....1.000 (5-5), S. Cranshaw vs. Grambling State (11/14/15) | .625 (10-16), Y. Watson, Grambling St. (11/14/15) |
| 3-PT. FIELD GOALS.....5, Shannon Cranshaw vs. Grambling State (11/14/15) | 1, 3x, Last by Cecily Carl, American (11/17/15) |
| 3-PT. FIELD GOALS ATT.....6, Jonquel Jones vs. American (11/17/15) | 3, Yosha Wats, Grambling State (11/14/15) |
| 3-PT. FG PCT. (min. 2 made).....1.000 (5-5), S. Cranshaw vs. Grambling State (11/14/15) | NA |
| FREE THROWS.....5, Kelli Prange vs. American (11/17/15) | 3, 2x, Last by M. Holmes, American (11/17/15) |
| FREE THROWS ATT.....6, Kelli Prange vs. American (11/17/15) | 6, Michelle Holmes, American (11/17/15) |
| FT PCT. (best perfect game).....1.000 (4-4), Jonquel Jones vs. American (11/17/15) | 1.000 (2-2), Emily Kinneston, American (11/17/15) |
| REBOUNDS.....11, Caira Washington vs. American (11/17/15) | 5, 2x, Last by M. Holmes, American (11/17/15) |
| ASSISTS.....5, Lauren Chase vs. American (11/17/15) | 3, 4x, Last by Holmes/Kinneston, American (11/17/15) |
| STEALS.....2, 4x, Lasdt by Lauren Chase vs. American (11/17/15) | 5, Yosha Watson, Grambling State (11/14/15) |
| BLOCKS.....3, Caira Washington vs. Grambling State (11/14/15) | 2, John'ea Thompson, Grambling State (11/14/15) |

2015-16 GW TEAM SUPERLATIVES

| GW HIGH | GW LOW |
|---|---|
| POINTS.....85.....vs. Grambling State (11/14/15) | 78.....vs. American (11/17/15) |
| FIELD GOALS.....34.....vs. Grambling State (11/14/15) | 29.....vs. American (11/17/15) |
| FIELD GOALS ATT.....73.....vs. Grambling State (11/14/15) | 57.....vs. American (11/17/15) |
| FIELD GOAL PCT......509 (29-57).....vs. American (11/17/15) | .466 (34-73).....vs. Grambling State (11/14/15) |
| 3-POINT FIELD GOALS.....10.....vs. Grambling State (11/14/15) | 5.....vs. American (11/17/15) |
| 3-PT. FIELD GOALS ATT.....20.....vs. Grambling State (11/14/15) | 18.....vs. American (11/17/15) |
| 3-POINT FG PCT......500 (10-20).....vs. Grambling State (11/14/15) | .278 (5-18).....vs. American (11/17/15) |
| FREE THROWS.....15.....vs. American (11/17/15) | 7.....vs. Grambling State (11/14/15) |
| FREE THROWS ATT.....25.....vs. American (11/17/15) | 11.....vs. Grambling State (11/14/15) |
| FREE THROW PCT......636 (7-11).....vs. Grambling State (11/14/15) | .600 (15-25).....vs. American (11/17/15) |
| REBOUNDS.....54.....vs. Grambling State (11/14/15) | 45.....vs. American (11/17/15) |
| ASSISTS.....17.....2x, Last vs. American (11/17/15) | 17.....2x, Last vs. American (11/17/15) |
| STEALS.....9.....vs. Grambling State (11/14/15) | 8.....vs. American (11/17/15) |
| BLOCKS.....6.....vs. Grambling State (11/14/15) | 3.....vs. American (11/17/15) |
| TURNOVERS.....23.....vs. Grambling State (11/14/15) | 15.....vs. American (11/17/15) |
| FOULS.....15.....vs. American (11/17/15) | 14.....vs. Grambling State (11/14/15) |
| POINTS, HALF.....49.....1st half vs. Grambling State (11/14/15) | 34.....1st half vs. American (11/17/15) |
| POINTS, QUARTER.....29.....1st quarter vs. Grambling State (11/14/15) | 10.....2nd quarter vs. American (11/17/15) |

2015-16 OPPONENT TEAM SUPERLATIVES

| OPPONENT HIGH | OPPONENT LOW |
|--|--|
| POINTS.....58.....vs. Grambling State (11/14/15) | 48.....vs. American (11/17/15) |
| FIELD GOALS.....25.....vs. Grambling State (11/14/15) | 19.....vs. American (11/17/15) |
| FIELD GOALS ATT.....65.....vs. Grambling State (11/14/15) | 55.....vs. American (11/17/15) |
| FIELD GOAL PCT......385 (25-65).....vs. Grambling State (11/14/15) | .345 (19-55).....vs. American (11/17/15) |
| 3-POINT FIELD GOALS.....2.....vs. Grambling State (11/14/15) | 1.....vs. American (11/17/15) |
| 3-PT. FIELD GOALS ATT.....12.....vs. Grambling State (11/14/15) | 7.....vs. American (11/17/15) |
| 3-POINT FG PCT......167 (2-12).....vs. Grambling State (11/14/15) | .143 (1-7).....vs. American (11/17/15) |
| FREE THROWS.....9.....vs. American (11/17/15) | 6.....vs. Grambling State (11/14/15) |
| FREE THROWS ATT.....18.....vs. American (11/17/15) | 13.....vs. Grambling State (11/14/15) |
| FREE THROW PCT......500 (9-18).....vs. American (11/17/15) | .462 (6-13).....vs. Grambling State (11/14/15) |
| REBOUNDS.....29.....vs. Grambling State (11/14/15) | 25.....vs. American (11/17/15) |
| ASSISTS.....11.....vs. Grambling State (11/14/15) | 10.....vs. American (11/17/15) |
| STEALS.....18.....vs. Grambling State (11/14/15) | 5.....vs. American (11/17/15) |
| BLOCKS.....4.....vs. Grambling State (11/14/15) | 0.....vs. American (11/17/15) |
| TURNOVERS.....20.....vs. Grambling State (11/14/15) | 16.....vs. American (11/17/15) |
| FOULS.....18.....vs. American (11/17/15) | 16.....vs. Grambling State (11/14/15) |
| POINTS, HALF.....32.....2nd half vs. Grambling State (11/14/15) | 18.....1st half vs. American (11/17/15) |
| POINTS, QUARTER.....20.....4th quarter vs. American (11/17/15) | 8.....1st quarter vs. American (11/17/15) |

| PLAYER | '15-16 | '14-15 | '13-14 | '12-13 | '11-12 | Career |
|---------------------------------------|--------|--------|--------|--------|--------|--------|
| Double-Figure Scoring Games | | | | | | |
| Jonquel Jones | 1 | 29 | 17 | 4 | - | 51 |
| Caira Washington | 2 | 22 | 20 | - | - | 44 |
| Hannah Schaible | - | 18 | 11 | - | - | 29 |
| Lauren Chase | 0 | 8 | - | 5 | 12 | 25 |
| Kelli Prange | 2 | 11 | - | - | - | 13 |
| Shannon Cranshaw | 1 | 4 | 1 | - | - | 6 |
| Alexis Chandler | 0 | 0 | 2 | 2 | - | 4 |
| Brianna Cummings | 0 | 3 | - | - | - | 3 |
| Aaliyah Brown | 0 | 1 | 1 | 1 | - | 3 |
| DaLacy Anderson | 0 | 0 | 2 | 0 | - | 2 |
| Mia Farmer | 0 | 1 | - | - | - | 1 |
| Double-Figure Rebounding Games | | | | | | |
| Jonquel Jones | 1 | 21 | 14 | 5 | - | 41 |
| Caira Washington | 1 | 8 | 13 | - | - | 22 |
| Hannah Schaible | - | 3 | 6 | - | - | 9 |
| Brianna Cummings | 0 | 1 | - | - | - | 1 |
| Kelli Prange | 0 | 1 | - | - | - | 1 |
| PLAYER | '15-16 | '14-15 | '13-14 | '12-13 | '11-12 | Career |
| Games as Leading Scorer | | | | | | |
| Jonquel Jones | 0 | 14 | 8 | 2 | - | 24 |
| Caira Washington | 2 | 10 | 4 | - | - | 16 |
| Lauren Chase | 0 | 1 | - | 3 | 3 | 7 |
| Hannah Schaible | - | 5 | 1 | - | - | 6 |
| Kelli Prange | 0 | 4 | - | - | - | 4 |
| Shannon Cranshaw | 0 | 2 | 0 | - | - | 2 |
| Alexis Chandler | 0 | 0 | 1 | 0 | - | 1 |
| Games as Leading Rebounder | | | | | | |
| Jonquel Jones | 1 | 24 | 13 | 5 | - | 43 |
| Caira Washington | 1 | 4 | 15 | - | - | 20 |
| Hannah Schaible | - | 4 | 1 | - | - | 5 |
| Kelli Prange | 0 | 3 | - | - | - | 3 |
| Brianna Cummings | 0 | 1 | - | - | - | 1 |
| Aaliyah Brown | 0 | 0 | 1 | 0 | - | 1 |
| Alexis Chandler | 0 | 0 | 1 | 0 | - | 1 |

RECORDS WATCH

CAREER REBOUNDS

| PLAYER | REBOUNDS | YEAR |
|----------------------|----------|------------|
| 1. Darlene Saar | 1,139 | 1992-95 |
| 2. Tajama Abraham | 970 | 1994-97 |
| 3. Kas Allen | 878 | 1984-88 |
| 4. Marise James | 840 | 1975-79 |
| 5. Kristin McArdle | 830 | 1989-92 |
| 6. Tara Booker | 814 | 2008-13 |
| 7. Ugo Oha | 785 | 2000-04 |
| 8. Jessica Adair | 770 | 2005-09 |
| 9. Tracey Earley | 756 | 1985-89 |
| 10. Anna Montañana | 746 | 2001-05 |
| 11. Trish Egan | 730 | 1978-82 |
| 12. Brooke Wilson | 705 | 2008-14 |
| 13. Whitney Allen | 693 | 2004-08 |
| 14. Gloria Murphy | 642 | 1984-88 |
| Jonquel Jones | 642* | 2013-Pres. |
| 16. Caira Washington | 586 | 2013-Pres. |

CAREER BLOCKS

| PLAYER | BLOCK | YEAR |
|---------------------|-------|------------|
| 1. Ugo Oha | 355 | 2000-04 |
| 2. Tajama Abraham | 326 | 1994-97 |
| 3. Mary K. Nordling | 264 | 1989-92 |
| 4. Martha Williams | 250 | 1992-95 |
| 5. Jessica Adair | 161 | 2005-09 |
| 6. Tara Booker | 110 | 2008-13 |
| 7. Joan Nowotny | 105 | 1976-80 |
| 8. Carol Byrd | 104 | 1978-82 |
| Jonquel Jones | 104* | 2013-Pres. |
| 10. Sara Mostafa | 101 | 2008-13 |

*Only GW stats included

GW STARTERS BY GAME

Grambling: Chase, Cranshaw, Jones, Prange, Washington

American: Chase, Cranshaw, Jones, Prange, Washington

Stanford:

Fresno State:

Houston:

Iowa:

Wright State:

Florida Gulf Coast:

Memphis:

Villanova:

Iona:

Illinois:

Hartford:

Saint Joseph's:

Rhode Island:

Dayton:

La Salle:

Duquesne:

Massachusetts:

George Mason:

Davidson:

Saint Louis:

Fordham:

Richmond:

Dayton:

St. Bonaventure:

VCU:

Richmond:

George Mason:

GW RECORD BY STARTERS

Chase, Cranshaw, Jones, Prange, Washington 2-0

LAST TIME OUT - #22/20 GW 78, AMERICAN 48 (11/17/15)

WASHINGTON - The frontcourt trio of junior Caira Washington, senior Jonquel Jones and sophomore Kelli Prange combined for 53 points to lead the No. 22/20 George Washington women's basketball team to a 78-48 win over District rival American on Tuesday evening at the Charles E. Smith Center.

Washington, who had 23 points in GW's season-opening win over Grambling State on Saturday, continued her torrid start with a game-high 21 points on 10-of-12 shooting while adding 11 rebounds for her 19th career double-double. Prange finished with 18 points and six rebounds, and Jones added 14 points and seven boards.

GW (2-0) raced out to a 24-8 advantage after the opening quarter and never looked back. With the game tied at 4-4 after 1:20 of action, the Colonials surged ahead with a 20-2 run, holding American (0-2) without a field goal for nearly six minutes. Washington connected on all six of her field goal attempts in the first period and had 12 points after 10 minutes of play.

The Colonials carried a 34-18 lead into halftime before outscoring the Eagles, 26-10, in the third quarter with 11 straight points to end the period, building a commanding 60-28 advantage after 30 minutes. American cut its deficit to 20 points, 67-47, with 4:01 remaining after a 16-5 run, but GW closed the game out with an 11-1 spurt that included five points from freshman Mei-Lyn Bautista, who was making her collegiate debut, and four from senior DaLacy Anderson, for the 78-48 victory.

GW shot 50.9 percent (29-of-57) from the floor while holding American to 34.5 percent (19-of-55) on the night. The Colonials outrebounded the Eagles, 45-25.

Michelle Holmes led American with 17 points and five rebounds. Each added 10 points off the bench.

| Official Basketball Box Score - Game Totals - Final Statistics | | | | | | | | | | | | | | |
|--|-------------------|-------|------|-------|-------|----------|-----|----|----|----|-----|-----|-----|-----|
| AMERICAN vs George Washington | | | | | | | | | | | | | | |
| 11/17/15 7:00 p.m. at Washington, DC (Charles E. Smith Center) | | | | | | | | | | | | | | |
| AMERICAN 48 • 0-2 | | | | | | | | | | | | | | |
| # | Player | FG | FGA | FT | FTA | Rebounds | PF | TP | A | TO | Blk | Stl | Min | |
| | | FG | FGA | FT | FTA | Off | Def | TP | | | | | | |
| 10 | Crisler, Lauren | 3-8 | 0-0 | 2-5 | 2 | 2 | 2 | 4 | 2 | 8 | 1 | 0 | 0 | 23 |
| 12 | Holmes, Michelle | 7-14 | 0-0 | 3-6 | 0 | 5 | 5 | 3 | 17 | 3 | 2 | 0 | 0 | 23 |
| 04 | Kinneston, Emily | 2-6 | 0-1 | 2-2 | 0 | 3 | 3 | 1 | 6 | 3 | 2 | 0 | 0 | 36 |
| 14 | Liddane, Maria | 1-10 | 0-1 | 0-0 | 0 | 1 | 1 | 3 | 2 | 4 | 0 | 1 | 0 | 38 |
| 23 | Koskimies, Elina | 1-3 | 0-2 | 1-2 | 0 | 1 | 1 | 4 | 3 | 0 | 1 | 0 | 1 | 21 |
| 13 | Nieuwenhuizen, M. | 0-0 | 0-0 | 0-0 | 0 | 0 | 0 | 0 | 0 | 0 | 0 | 0 | 0 | 1 |
| 20 | Light, Jordan | 0-3 | 0-1 | 0-0 | 0 | 1 | 1 | 1 | 0 | 0 | 1 | 0 | 0 | 17 |
| 21 | Bond, Kate | 0-1 | 0-1 | 0-0 | 0 | 2 | 2 | 1 | 0 | 1 | 0 | 1 | 0 | 8 |
| 33 | Harris, Michael | 3-5 | 0-0 | 1-2 | 0 | 3 | 3 | 2 | 7 | 0 | 2 | 0 | 0 | 15 |
| 44 | Carl, Cecily | 2-5 | 1-1 | 0-1 | 1 | 0 | 1 | 1 | 5 | 1 | 2 | 0 | 0 | 10 |
| | Team | | | | | 0 | 4 | 4 | | | | | | |
| Totals | | 19-55 | 1-7 | 9-18 | 3 | 22 | 25 | 18 | 48 | 10 | 16 | 0 | 5 | 200 |
| FG % 1st half: 8-26 30.8% 2nd half: 11-29 37.9% Game: 19-55 34.5% | | | | | | | | | | | | | | |
| 3FG % 1st half: 0-4 0.0% 2nd half: 1-3 33.3% Game: 1-7 14.3% | | | | | | | | | | | | | | |
| FT % 1st half: 2-5 40.0% 2nd half: 7-13 53.8% Game: 9-18 50.0% | | | | | | | | | | | | | | |
| Rebounds 5 | | | | | | | | | | | | | | |
| George Washington 78 • 2-0 | | | | | | | | | | | | | | |
| # | Player | FG | FGA | FT | FTA | Rebounds | PF | TP | A | TO | Blk | Stl | Min | |
| | | FG | FGA | FT | FTA | Off | Def | TP | | | | | | |
| 03 | WASHINGTON, Caira | 10-12 | 0-0 | 1-2 | 3 | 8 | 11 | 3 | 21 | 2 | 1 | 1 | 1 | 21 |
| 25 | PRANGE, Kelli | 6-11 | 1-3 | 5-6 | 1 | 5 | 6 | 1 | 18 | 0 | 1 | 0 | 0 | 24 |
| 5 | JONES, Jonquel | 4-11 | 2-6 | 4-4 | 1 | 6 | 7 | 2 | 14 | 2 | 1 | 1 | 1 | 25 |
| 04 | CHASE, Lauren | 1-4 | 0-0 | 0-0 | 0 | 2 | 2 | 0 | 2 | 5 | 3 | 0 | 0 | 25 |
| 11 | CRANSHAW, Shannon | 0-4 | 0-3 | 1-2 | 1 | 1 | 2 | 1 | 1 | 3 | 2 | 0 | 0 | 23 |
| 01 | MAHONEY, Kelsi | 0-0 | 0-0 | 0-0 | 0 | 1 | 1 | 1 | 0 | 0 | 0 | 0 | 0 | 4 |
| 02 | TAPIAS, Camila | 0-1 | 0-1 | 0-0 | 0 | 0 | 0 | 0 | 0 | 0 | 0 | 0 | 0 | 5 |
| 05 | BROWN, Aaliyah | 0-1 | 0-1 | 2-3 | 0 | 1 | 1 | 2 | 0 | 1 | 1 | 0 | 0 | 12 |
| 14 | ANDERSON, DaLacy | 3-4 | 1-1 | 0-4 | 2 | 0 | 2 | 0 | 7 | 0 | 1 | 0 | 0 | 7 |
| 35 | FARMER, Mia | 0-1 | 0-1 | 0-0 | 0 | 0 | 0 | 0 | 0 | 1 | 0 | 0 | 0 | 7 |
| 21 | BAUTISTA, Mei-Lyn | 2-2 | 1-1 | 0-0 | 0 | 1 | 1 | 1 | 5 | 1 | 1 | 0 | 0 | 9 |
| 22 | MATTHEWS, Jada | 1-2 | 0-1 | 0-0 | 0 | 0 | 0 | 0 | 1 | 2 | 0 | 0 | 0 | 6 |
| 24 | CHANDLER, Alexis | 1-2 | 0-0 | 0-0 | 1 | 2 | 3 | 1 | 2 | 1 | 0 | 1 | 0 | 16 |
| 34 | CUMMINGS, Brianna | 1-2 | 0-0 | 2-4 | 0 | 3 | 0 | 4 | 1 | 0 | 1 | 1 | 1 | 16 |
| | Team | | | | | 0 | 6 | 6 | | | | | | |
| Totals | | 29-57 | 5-18 | 15-25 | 9 | 36 | 45 | 15 | 78 | 17 | 15 | 3 | 8 | 200 |
| FG % 1st half: 14-26 53.8% 2nd half: 15-31 48.4% Game: 29-57 50.9% | | | | | | | | | | | | | | |
| 3FG % 1st half: 1-4 25.0% 2nd half: 4-14 28.6% Game: 5-18 27.8% | | | | | | | | | | | | | | |
| FT % 1st half: 5-10 50.0% 2nd half: 10-15 66.7% Game: 15-25 60.0% | | | | | | | | | | | | | | |
| Officials: Bryan Enterline, Brandon Enterline, Mark Beltrams | | | | | | | | | | | | | | |
| Technical fouls: None. George Washington-None. | | | | | | | | | | | | | | |
| Attendance: 785 | | | | | | | | | | | | | | |
| Score by periods | | | | | | | | | | | | | | |
| | 1st | 2nd | 3rd | 4th | Total | | | | | | | | | |
| AMERICAN | 8 | 10 | 10 | 20 | 48 | | | | | | | | | |
| George Washington | 24 | 10 | 26 | 18 | 78 | | | | | | | | | |
| Last FG - AMERICAN 4th-04:01, GW 4th-00:32 | | | | | | | | | | | | | | |
| Largest lead - AMERICAN None, GW by 32 3rd-00:20. | | | | | | | | | | | | | | |
| AMERICAN led for 00:00, GW led for 38:23. Game was tied for 00:59. | | | | | | | | | | | | | | |
| Points | | | | | | | | | | | | | | |
| In Paint | | | | | | | | | | | | | | |
| AMERICAN | | | | | | | | | | | | | | |
| GW | | | | | | | | | | | | | | |
| Score tied - 2 times. | | | | | | | | | | | | | | |
| Lead changed - 0 times. | | | | | | | | | | | | | | |

THE LAST TIME...
GW Individual

Scored 40 or more points: Kelly Ballantine, 40 vs. East Carolina (2/27/83)
Scored 30 or more points: Jonquel Jones, 30 vs. Saint Joseph's (A-10) (3/7/14)
Had 20 or more rebounds: Jessica Adair, 21 vs. Boise State (NCAA) (3/17/07)
Had 10+ assists: Lauren Chase vs. Bowie State (11/19/14)
Had 10+ steals: Chakecia Miller, 10 vs. Rhode Island (1/27/13)
Had 10+ blocks: Mark K. Nordling, 10 vs. Iona (1/11/92)
Made 10+ field goals: Caira Washington, 10 vs. American (11/17/15)
Made 5+ three-point field goals: Shannon Cranshaw, 5 vs. Grambling State (11/14/15)
Made 10+ free throws: Hannah Schaible, 10 (10-10) vs. Dayton (A-10) (3/8/14)
Had a double-double: Caira Washington (21p/11r) vs. American (11/17/15)
Had a triple-double: Anna Montanana, 11p/12r/13a vs. La Salle (1/31/04)

GW Team

Won in overtime: .81-69 (OT) at Richmond (2/26/15)
Lost in overtime: .63-59 (2OT) vs. Duquesne (1/30/13)
Played 2+ overtimes: .2OT (L, 63-59) vs. Duquesne (1/30/13)
Scored 100+ points: .W 114-55 vs. Bluefield State (12/31/13)
Scored 90+ points: .W 94-68 at George Mason (1/18/14)
Scored less than 50 points: .49 vs. Dayton (A-10) (L, 74-49, 3/9/13)
Allowed less than 50 points: .48 vs. American (W, 78-48, 11/17/15)
Allowed less than 40 points: .35 vs. Davidson (W, 52-35, 2/5/15)
Shot better than 60.0%: .66.7% (36-of-54) vs. Brown (1/6/08)
Held opponent under 30.0%: .29.8% (17-of-57) vs. George Mason (3/1/15)
Made 40+ field goals: .43 vs. Bluefield State (12/31/13)
Made 10+ three-point field goals: .10 vs. Grambling State (11/14/15)
Didn't make a three-point field goal: . at Rhode Island (1/15/15)
Attempted 40+ free throws: .40 vs. East Carolina (WNIT) (3/19/14)
Made 30+ free throws: .32 at Duquesne (1/12/98)
Had 60+ rebounds: .63 at La Salle (1/24/15)
Had 30+ assists: .34 vs. St. Bonaventure (1/23/05) (A-10 Record)
Committed less than 10 turnovers: .6 at St. Bonaventure (2/4/12)
Committed 35+ turnovers: .37 at Howard (12/6/03)
Forced 30+ turnovers: .33 vs. Bluefield State (12/31/13)
Had 10+ blocked shots: .10 vs. East Carolina (3/19/14)
Had 20+ steals: .21 vs. Jacksonville State (12/1/13)
Two players had 20+ points: . at Dayton (1/4/15)
Jonquel Jones (24), Caira Washington (23)
Five players had 10+ points: . vs. East Carolina (3/19/14)
Megan Nipe (20), Danni Jackson (18), Caira Washington (14), Jonquel Jones (10), Chakecia Miller (10)
Six players had 10+ points: . vs. Bluefield State (12/31/13)
A. Chandler (21), C. Washington (18), J. Jones (15), D. Anderson (14), A. Brown (14), D. Jackson (12), H. Schaible (10)
Two players had 10+ rebounds: . vs. Dayton (A-10) (3/8/15)
Hannah Schaible (11), Caira Washington (10)
Two players had a double-double: . at VCU (2/18/15)
Jonquel Jones (15p/18r), Caira Washington (16p/12r)
Three players had a double-double: . vs. Dayton (3/1/14)
Jonquel Jones (22p/13r), Caira Washington (18p/12r), Danni Jackson (17p/12a)

** - A-10 Record

GEORGE WASHINGTON WOMEN'S BASKETBALL

GWSPORTS.COM | THE OFFICIAL WEBSITE OF GEORGE WASHINGTON ATHLETICS



Official Basketball Box Score -- Game Totals -- Final Statistics
Christopher Newport vs George Washington
11/08/15 12:00 PM at Washington, DC; Charles E. Smith Center



Christopher Newport 47

| # | Player | Total | | 3-Ptr | | Rebounds | | PF | TP | A | TO | Blk | Stl | Min |
|----------------------|--------------------|-------|----------------|-------|-------|-------------|-----|-------|----------|----|----|-----|-----|-----|
| | | FG | FGA | FG | FGA | Off | Def | | | | | | | |
| 20 | Devon Byrd | 1-5 | 0-1 | 0-0 | 0-0 | 0 | 0 | 1 | 2 | 1 | 0 | 1 | 1 | 18 |
| 24 | Sam Porter | 2-7 | 1-3 | 4-4 | 0 | 1 | 1 | 3 | 9 | 0 | 2 | 0 | 1 | 19 |
| 00 | Jalynn Ponzio | 5-11 | 2-6 | 0-0 | 1 | 2 | 3 | 2 | 12 | 0 | 3 | 0 | 0 | 22 |
| 04 | Bailey Dufrene | 3-12 | 3-7 | 0-2 | 1 | 3 | 4 | 1 | 9 | 1 | 1 | 1 | 1 | 22 |
| 21 | Makenzie Fancher | 0-4 | 0-1 | 0-0 | 0 | 5 | 5 | 1 | 0 | 7 | 6 | 0 | 1 | 25 |
| 02 | Makeda Wright | 1-3 | 1-2 | 0-0 | 0 | 0 | 0 | 1 | 3 | 1 | 0 | 0 | 1 | 10 |
| 03 | Zhara Tannor | 0-2 | 0-0 | 0-2 | 1 | 1 | 2 | 1 | 0 | 1 | 5 | 1 | 0 | 11 |
| 05 | Madison Bloxom | 0-3 | 0-1 | 0-0 | 0 | 0 | 0 | 0 | 0 | 0 | 2 | 0 | 0 | 4 |
| 14 | Brooke Basinger | 0-0 | 0-0 | 0-0 | 0 | 0 | 0 | 0 | 2 | 0 | 0 | 0 | 0 | 5 |
| 15 | Jasmine Bonivel | 2-5 | 1-2 | 0-0 | 1 | 1 | 2 | 0 | 5 | 0 | 1 | 0 | 0 | 15 |
| 22 | Madison Howdyshell | 0-1 | 0-1 | 0-0 | 1 | 3 | 4 | 1 | 0 | 0 | 1 | 0 | 0 | 8 |
| 30 | Jessica Dagulh | 0-2 | 0-0 | 0-0 | 2 | 2 | 4 | 1 | 0 | 0 | 1 | 0 | 0 | 12 |
| 32 | Anitra Thomas | 2-3 | 2-2 | 0-0 | 2 | 0 | 2 | 1 | 6 | 2 | 0 | 0 | 0 | 9 |
| 33 | Tyler Robin | 0-0 | 0-0 | 0-0 | 0 | 0 | 0 | 2 | 0 | 0 | 0 | 0 | 0 | 4 |
| 42 | Ellen Nye | 0-1 | 0-1 | 1-2 | 1 | 2 | 3 | 2 | 1 | 0 | 0 | 0 | 0 | 9 |
| 44 | Raven Lott | 0-2 | 0-0 | 0-0 | 0 | 1 | 1 | 0 | 0 | 0 | 0 | 0 | 0 | 3 |
| 45 | Savannah Melvin | 0-0 | 0-0 | 0-0 | 0 | 0 | 0 | 0 | 0 | 0 | 0 | 0 | 0 | 4 |
| Team | | | | | | | | | | | | | | |
| Totals | | 16-62 | 10-27 | 5-10 | 14 | 23 | 37 | 19 | 47 | 13 | 26 | 3 | 5 | 200 |
| FG % 1st Half: 9-33 | | 27.3% | 2nd half: 7-29 | | 24.1% | Game: 16-62 | | 25.8% | Deadball | | | | | |
| 3FG % 1st Half: 5-15 | | 33.3% | 2nd half: 5-12 | | 41.7% | Game: 10-27 | | 37.0% | Rebounds | | | | | |
| FT % 1st Half: 2-2 | | 100.0 | 2nd half: 3-8 | | 37.5% | Game: 5-10 | | 50.0% | | | | | | |

George Washington 95

| # | Player | Total | | 3-Ptr | | Rebounds | | PF | TP | A | TO | Blk | Stl | Min |
|----------------------|-------------------|-------|-----------------|-------|-------|-------------|-----|-------|----------|----|----|-----|-----|-----|
| | | FG | FGA | FG | FGA | Off | Def | | | | | | | |
| 03 | WASHINGTON, Caira | 7-12 | 0-0 | 1-1 | 2 | 3 | 5 | 0 | 15 | 0 | 0 | 0 | 0 | 16 |
| 25 | PRANGE, Kelli | 9-12 | 2-3 | 1-1 | 1 | 3 | 4 | 3 | 21 | 0 | 0 | 0 | 0 | 19 |
| 35 | JONES, Jonquel | 6-11 | 0-1 | 2-2 | 5 | 1 | 6 | 0 | 14 | 3 | 1 | 3 | 1 | 17 |
| 04 | CHASE, Lauren | 3-8 | 0-0 | 1-1 | 1 | 5 | 6 | 1 | 7 | 6 | 1 | 0 | 2 | 18 |
| 13 | CRANSHAW, Shannon | 0-5 | 0-3 | 2-2 | 1 | 3 | 4 | 1 | 2 | 6 | 4 | 1 | 1 | 24 |
| 01 | MAHONEY, Kelsi | 1-3 | 0-0 | 0-2 | 2 | 1 | 3 | 0 | 2 | 0 | 0 | 1 | 1 | 10 |
| 02 | TAPIAS, Camila | 6-8 | 2-4 | 0-0 | 0 | 0 | 0 | 0 | 14 | 0 | 0 | 0 | 1 | 13 |
| 05 | BROWN, Aaliyah | 5-11 | 1-6 | 0-0 | 0 | 2 | 2 | 2 | 11 | 1 | 0 | 0 | 4 | 18 |
| 14 | ANDERSON, DaLacy | 1-2 | 0-0 | 0-0 | 1 | 2 | 3 | 0 | 2 | 1 | 1 | 0 | 0 | 11 |
| 15 | FARMER, Mia | 0-2 | 0-0 | 0-0 | 2 | 0 | 2 | 1 | 0 | 0 | 0 | 0 | 2 | 17 |
| 22 | MATTHEWS, Jada | 0-5 | 0-1 | 1-2 | 2 | 4 | 6 | 1 | 1 | 0 | 2 | 0 | 1 | 15 |
| 24 | CHANDLER, Alexis | 0-2 | 0-0 | 2-4 | 2 | 3 | 5 | 1 | 2 | 3 | 1 | 2 | 1 | 14 |
| 34 | CUMMINGS, Brianna | 2-3 | 0-1 | 0-0 | 0 | 2 | 2 | 1 | 4 | 3 | 2 | 0 | 0 | 8 |
| Team | | | | | | | | | | | | | | |
| Totals | | 40-84 | 5-19 | 10-15 | 24 | 34 | 58 | 11 | 95 | 23 | 12 | 7 | 15 | 200 |
| FG % 1st Half: 22-42 | | 52.4% | 2nd half: 18-42 | | 42.9% | Game: 40-84 | | 47.6% | Deadball | | | | | |
| 3FG % 1st Half: 3-10 | | 30.0% | 2nd half: 2-9 | | 22.2% | Game: 5-19 | | 26.3% | Rebounds | | | | | |
| FT % 1st Half: 2-3 | | 66.7% | 2nd half: 8-12 | | 66.7% | Game: 10-15 | | 66.7% | | | | | | |

Officials: Nykesha Thompson, Carmen Portueral, Latifa Boice
Technical fouls: Christopher Newport-None. George Washington-None.
Attendance: 417

| Score by periods | 1st | 2nd | 3rd | 4th | Total |
|---------------------|-----|-----|-----|-----|-------|
| Christopher Newport | 7 | 18 | 13 | 9 | 47 |
| George Washington | 28 | 21 | 25 | 21 | 95 |

Last FG - CNU 4th-05:00, GW 4th-00:31.
Largest lead - CNU None, GW by 48 4th-00:31.
CNU led for 00:00. GW led for 39:09. Game was tied for 00:17.



Official Basketball Box Score -- Game Totals -- Final Statistics
AMERICAN vs George Washington
11/17/15 7:00 p.m. at Washington, DC (Charles E. Smith Center)



AMERICAN 48 • 0-2

| # | Player | Total | | 3-Ptr | | Rebounds | | PF | TP | A | TO | Blk | Stl | Min |
|---------------------|-------------------|-------|-----------------|-------|-------|-------------|-----|-------|----------|----|----|-----|-----|-----|
| | | FG | FGA | FG | FGA | Off | Def | | | | | | | |
| 10 | Crisler, Lauren | 3-8 | 0-0 | 2-5 | 2 | 2 | 4 | 2 | 8 | 1 | 0 | 0 | 0 | 23 |
| 12 | Holmes, Michelle | 7-14 | 0-0 | 3-6 | 0 | 5 | 5 | 3 | 17 | 3 | 2 | 0 | 2 | 31 |
| 04 | Kinneston, Emily | 2-6 | 0-1 | 2-2 | 0 | 3 | 3 | 1 | 6 | 3 | 2 | 0 | 0 | 36 |
| 14 | Liddane, Maria | 1-10 | 0-1 | 0-0 | 0 | 1 | 1 | 3 | 2 | 2 | 4 | 0 | 1 | 38 |
| 23 | Koskimies, Elina | 1-3 | 0-2 | 1-2 | 0 | 1 | 1 | 4 | 3 | 0 | 1 | 0 | 1 | 21 |
| 13 | Nieuwenhuizen, M. | 0-0 | 0-0 | 0-0 | 0 | 0 | 0 | 0 | 0 | 0 | 0 | 0 | 0 | 1 |
| 20 | Light, Jordan | 0-3 | 0-1 | 0-0 | 0 | 1 | 1 | 1 | 0 | 0 | 1 | 0 | 0 | 17 |
| 21 | Bond, Kate | 0-1 | 0-1 | 0-0 | 0 | 2 | 2 | 1 | 0 | 0 | 1 | 0 | 1 | 8 |
| 33 | Harris, Michael | 3-5 | 0-0 | 1-2 | 0 | 3 | 3 | 2 | 7 | 0 | 2 | 0 | 0 | 15 |
| 44 | Carl, Cecily | 2-5 | 1-1 | 0-1 | 1 | 0 | 1 | 1 | 5 | 1 | 2 | 0 | 0 | 10 |
| Team | | | | | | | | | | | | | | |
| Totals | | 19-55 | 1-7 | 9-18 | 3 | 22 | 25 | 18 | 48 | 10 | 16 | 0 | 5 | 200 |
| FG % 1st Half: 8-26 | | 30.8% | 2nd half: 11-29 | | 37.9% | Game: 19-55 | | 34.5% | Deadball | | | | | |
| 3FG % 1st Half: 0-4 | | 0.0% | 2nd half: 1-3 | | 33.3% | Game: 1-7 | | 14.3% | Rebounds | | | | | |
| FT % 1st Half: 2-5 | | 40.0% | 2nd half: 7-13 | | 53.8% | Game: 9-18 | | 50.0% | | | | | | |

George Washington 78 • 2-0

| # | Player | Total | | 3-Ptr | | Rebounds | | PF | TP | A | TO | Blk | Stl | Min |
|----------------------|-------------------|-------|-----------------|-------|-------|-------------|-----|-------|----------|----|----|-----|-----|-----|
| | | FG | FGA | FG | FGA | Off | Def | | | | | | | |
| 03 | WASHINGTON, Caira | 10-12 | 0-0 | 1-2 | 3 | 8 | 11 | 3 | 21 | 2 | 1 | 1 | 1 | 21 |
| 25 | PRANGE, Kelli | 6-11 | 1-3 | 5-6 | 1 | 5 | 6 | 1 | 18 | 0 | 1 | 0 | 0 | 24 |
| 35 | JONES, Jonquel | 4-11 | 2-6 | 4-4 | 1 | 6 | 7 | 2 | 14 | 2 | 1 | 1 | 1 | 25 |
| 04 | CHASE, Lauren | 1-4 | 0-0 | 0-0 | 0 | 2 | 2 | 0 | 5 | 3 | 0 | 2 | 2 | 25 |
| 13 | CRANSHAW, Shannon | 0-4 | 0-3 | 1-2 | 1 | 1 | 2 | 1 | 3 | 2 | 0 | 1 | 2 | 23 |
| 01 | MAHONEY, Kelsi | 0-0 | 0-0 | 0-0 | 0 | 1 | 1 | 0 | 0 | 0 | 0 | 0 | 0 | 4 |
| 02 | TAPIAS, Camila | 0-1 | 0-1 | 0-0 | 0 | 0 | 0 | 0 | 0 | 0 | 0 | 0 | 0 | 5 |
| 05 | BROWN, Aaliyah | 0-1 | 0-1 | 2-3 | 0 | 1 | 1 | 4 | 2 | 1 | 1 | 0 | 0 | 12 |
| 14 | ANDERSON, DaLacy | 3-4 | 1-1 | 0-4 | 2 | 0 | 2 | 0 | 7 | 0 | 1 | 0 | 0 | 7 |
| 15 | FARMER, Mia | 0-1 | 0-1 | 0-0 | 0 | 0 | 0 | 0 | 0 | 1 | 0 | 0 | 1 | 7 |
| 21 | BAUTISTA, Mei-Lyn | 2-2 | 1-1 | 0-0 | 0 | 0 | 0 | 1 | 5 | 1 | 1 | 0 | 0 | 9 |
| 22 | MATTHEWS, Jada | 1-2 | 0-1 | 0-0 | 0 | 0 | 0 | 1 | 2 | 0 | 2 | 0 | 0 | 6 |
| 24 | CHANDLER, Alexis | 1-2 | 0-0 | 0-0 | 1 | 2 | 3 | 1 | 2 | 1 | 2 | 0 | 1 | 16 |
| 34 | CUMMINGS, Brianna | 1-2 | 0-0 | 2-4 | 0 | 3 | 3 | 0 | 4 | 1 | 0 | 1 | 1 | 16 |
| Team | | | | | | | | | | | | | | |
| Totals | | 29-57 | 5-18 | 15-25 | 9 | 36 | 45 | 15 | 78 | 17 | 15 | 3 | 8 | 200 |
| FG % 1st Half: 14-26 | | 53.8% | 2nd half: 15-31 | | 48.4% | Game: 29-57 | | 50.9% | Deadball | | | | | |
| 3FG % 1st Half: 1-4 | | 25.0% | 2nd half: 4-14 | | 28.6% | Game: 5-18 | | 27.8% | Rebounds | | | | | |
| FT % 1st Half: 5-10 | | 50.0% | 2nd half: 10-15 | | 66.7% | Game: 15-25 | | 60.0% | | | | | | |

Officials: Bryan Enterline, Brandon Enterline, Mark Behrens
Technical fouls: AMERICAN-None. George Washington-None.
Attendance: 785

| Score by periods | 1st | 2nd | 3rd | 4th | Total |
|-------------------|-----|-----|-----|-----|-------|
| AMERICAN | 8 | 10 | 10 | 20 | 48 |
| George Washington | 24 | 10 | 26 | 18 | 78 |

Last FG - AMERICAN 4th-04:01, GW 4th-00:32.
Largest lead - AMERICAN None, GW by 32 3rd-00:20.
AMERICAN led for 00:00. GW led for 38:23. Game was tied for 00:59.

Score tied - 2 times.
Lead changed - 0 times.

2015-1



#1 KELSI MAHONEY

Freshman | Forward | 6-1

Concord, N.C. | Jay M. Robinson

MAHONEY'S SEASON & CAREER HIGHS

| | | SEASON | | CAREER |
|----------|---|---------------------------------|---|---------------------------------|
| Points | 2 | vs. Grambling State, 11-14-15 | 2 | vs. Grambling State, 11-14-15 |
| FG | 1 | vs. Grambling State, 11-14-15 | 1 | vs. Grambling State, 11-14-15 |
| FGA | 3 | vs. Grambling State, 11-14-15 | 3 | vs. Grambling State, 11-14-15 |
| 3FG | 0 | NA | 0 | NA |
| 3FGA | 2 | vs. Grambling State, 11-14-15 | 2 | vs. Grambling State, 11-14-15 |
| FT | 0 | NA | 0 | NA |
| FTA | 0 | NA | 0 | NA |
| Rebounds | 1 | 2x, Last vs. American, 11-17-15 | 1 | 2x, Last vs. American, 11-17-15 |
| Assists | 0 | NA | 0 | NA |
| Blocks | 0 | NA | 0 | NA |
| Steals | 0 | NA | 0 | NA |
| Minutes | 4 | vs. American, 11-17-15 | 4 | vs. American, 11-17-15 |

2015-16 AS A FRESHMAN:

► Made her collegiate debut in the season opener against Grambling State (11/14) and tallied two points and one rebound in three minutes.

HIGH SCHOOL/PERSONAL

- Two-time Cabarrus County Player of the Year (2014, 2015)
- Earned conference player of the year and team MVP honors as a senior after averaging 15.5 points, 9.1 rebounds, 2.6 blocks and 2.2 steals per game
- McDonald's All-America nominee
- Finished her high school career as Jay M. Robinson's second-leading all-time scorer with 1,317 points to go with 985 rebounds and 250 blocks
- Four-time all-conference and all-county honoree and three-time all-district selection
- Led the Bulldogs to a pair of South Piedmont Conference titles
- Intends to major in business.

MAHONEY GAME-BY-GAME

| OPPONENT | GS | MIN | FG-FGA | 3FG-3FGA | FT-FTA | O | D | REB | PF | A | TO | B | S | PTS |
|-----------------|----|-----|--------|----------|--------|---|---|-----|----|---|----|---|---|-----|
| Grambling St. | 3 | 1-3 | 0-2 | 0-0 | 1 | 0 | 1 | 1 | 0 | 0 | 0 | 0 | 0 | 2 |
| American | 4 | 0-0 | 0-0 | 0-0 | 0 | 1 | 1 | 1 | 0 | 0 | 0 | 0 | 0 | 0 |
| #15/10 Stanford | | | | | | | | | | | | | | |
| Fresno State | | | | | | | | | | | | | | |
| Houston | | | | | | | | | | | | | | |
| Iowa | | | | | | | | | | | | | | |
| Wright State | | | | | | | | | | | | | | |
| FGCU | | | | | | | | | | | | | | |
| Memphis | | | | | | | | | | | | | | |
| Villanova | | | | | | | | | | | | | | |
| Iona | | | | | | | | | | | | | | |
| Illinois | | | | | | | | | | | | | | |
| Hartford | | | | | | | | | | | | | | |
| Saint Joseph's | | | | | | | | | | | | | | |
| Rhode Island | | | | | | | | | | | | | | |
| Dayton | | | | | | | | | | | | | | |
| La Salle | | | | | | | | | | | | | | |
| Duquesne | | | | | | | | | | | | | | |
| Massachusetts | | | | | | | | | | | | | | |
| George Mason | | | | | | | | | | | | | | |
| Davidson | | | | | | | | | | | | | | |
| Saint Louis | | | | | | | | | | | | | | |
| Fordham | | | | | | | | | | | | | | |
| Richmond | | | | | | | | | | | | | | |
| Dayton | | | | | | | | | | | | | | |
| St. Bonaventure | | | | | | | | | | | | | | |
| VCU | | | | | | | | | | | | | | |
| Richmond | | | | | | | | | | | | | | |
| George Mason | | | | | | | | | | | | | | |

MAHONEY'S CAREER STATISTICS

| | | | Total | | 3-Point | | F-Throws | | Rebounds | | | | | | | | | | | Scoring | |
|---------|-------|---------|--------|------|---------|------|----------|------|----------|-----|-----|-----|----|----|-----|----|-----|-----|-----|---------|--|
| Season | gp-gs | min/avg | fg-fga | pct | fg-fga | pct | ft-fta | pct | off | def | tot | avg | pf | fo | ast | to | blk | stl | pts | avg | |
| 2015-16 | 2-0 | 7/3.5 | 1-3 | .333 | 0-2 | .000 | 0-0 | .000 | 1 | 1 | 2 | 1.0 | 2 | 0 | 0 | 0 | 0 | 0 | 2 | 1.0 | |
| TOTAL | 2-0 | 7/3.5 | 1-3 | .333 | 0-2 | .000 | 0-0 | .000 | 1 | 1 | 2 | 1.0 | 2 | 0 | 0 | 0 | 0 | 0 | 2 | 1.0 | |

20 POSTSEASONS IN 25 YEARS | FOUR NCAA SWEET 16s | 1997 ELITE EIGHT



2015-16 AS A SOPHOMORE

2014-15 AS A FRESHMAN

► Saw action in 16 games and averaged 1.4 points and 0.4 rebounds in 3.0 minutes per contest during her rookie campaign ... Made 9-of-19 attempts from the floor, including 4-of-12 from three-point range

HIGH SCHOOL/PERSONAL

► Averaged 14.5 points, 5.4 assists and 2.0 steals per game and shot 40 percent from three-point range as a senior at IMG Academy ... Led the Ascenders to a 32-13 record in 2013-14.

► One of 25 seniors in the world selected to play in the 2014 SchollyMe All-World Game in Irvine, Calif.

► Member of the Colombian youth national team for four years ... Leading scorer for the Colombian U-18 National Team in 2012 ... Second in the world in scoring (15.0 ppg) and three-pointers made (3.0 per game) at the 2012 FIBA Americas Championship ... Also competed in the 2011 South American U-17 Championship, scoring 20 points with six three-pointers in the championship game as her team won the title, and in the 2009 South American U-15 Championship.

► Mother, Yenny Pinilla Garcia, was a star on the Colombian National Team and is currently its coach.

► Father, Jose Tapias Patron, was one of the best players in Colombian basketball history and currently coaches Piratas Bogotá, one of the top prof teams in Colombia.

#2 CAMILA TAPIAS

Sophomore | Guard | 5-6

Bogotá, Colombia | IMG Academy

TAPIAS' SEASON & CAREER HIGHS

| | | SEASON | | CAREER |
|----------|---|---------------------------------|---|---------------------------------------|
| Points | 0 | NA | 4 | vs. Bowie State, 11-19-14 |
| FG | 0 | NA | 2 | vs. Bowie State, 11-19-14 |
| FGA | 2 | vs. Grambling State, 11-14-15 | 3 | 3x, Last vs. Duquesne, 1-21-15 |
| 3FG | 0 | NA | 1 | 4x, Last vs. St. Bonaventure, 2-15-15 |
| 3FGA | 1 | 2x, Last vs. American, 11-17-15 | 2 | at Towson, 12-31-14 |
| FT | 0 | NA | 0 | NA |
| FTA | 0 | NA | 1 | vs. Duquesne, 1-21-15 |
| Rebounds | 1 | vs. Grambling State, 11-14-15 | 2 | at Towson, 12-31-14 |
| Assists | 1 | vs. Grambling State, 11-14-15 | 2 | at Towson, 12-31-14 |
| Blocks | 0 | NA | 0 | NA |
| Steals | 0 | NA | 1 | at George Mason, 1-31-15 |
| Minutes | 6 | vs. Grambling State, 11-14-15 | 8 | at Loyola, 12-28-14 |

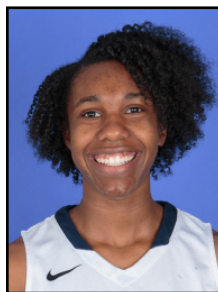
TAPIAS GAME-BY-GAME

| OPPONENT | GS | MIN | FG-FGA | 3FG-3FGA | FT-FTA | O | D | REB | PF | A | TO | B | S | PTS |
|-----------------|----|-----|--------|----------|--------|---|---|-----|----|---|----|---|---|-----|
| Grambling St. | 6 | 0-2 | 0-1 | 0-0 | 0 | 1 | 1 | 0 | 1 | 0 | 0 | 0 | 0 | 0 |
| American | 5 | 0-1 | 0-1 | 0-0 | 0 | 0 | 0 | 0 | 0 | 0 | 0 | 0 | 0 | 0 |
| #15/10 Stanford | | | | | | | | | | | | | | |
| Fresno State | | | | | | | | | | | | | | |
| Houston | | | | | | | | | | | | | | |
| Iowa | | | | | | | | | | | | | | |
| Wright State | | | | | | | | | | | | | | |
| FGCU | | | | | | | | | | | | | | |
| Memphis | | | | | | | | | | | | | | |
| Villanova | | | | | | | | | | | | | | |
| Iona | | | | | | | | | | | | | | |
| Illinois | | | | | | | | | | | | | | |
| Hartford | | | | | | | | | | | | | | |
| Saint Joseph's | | | | | | | | | | | | | | |
| Rhode Island | | | | | | | | | | | | | | |
| Dayton | | | | | | | | | | | | | | |
| La Salle | | | | | | | | | | | | | | |
| Duquesne | | | | | | | | | | | | | | |
| Massachusetts | | | | | | | | | | | | | | |
| George Mason | | | | | | | | | | | | | | |
| Davidson | | | | | | | | | | | | | | |
| Saint Louis | | | | | | | | | | | | | | |
| Fordham | | | | | | | | | | | | | | |
| Richmond | | | | | | | | | | | | | | |
| Dayton | | | | | | | | | | | | | | |
| St. Bonaventure | | | | | | | | | | | | | | |
| VCU | | | | | | | | | | | | | | |
| Richmond | | | | | | | | | | | | | | |
| George Mason | | | | | | | | | | | | | | |

TAPIAS' CAREER STATISTICS

| Season | gp-gs | min/avg | Total | | 3-Point | | F-Throws | | Rebounds | | | | Scoring | | | | | |
|---------|-------|---------|--------|------|---------|------|----------|------|----------|-----|-----|-----|---------|----|-----|----|-----|-----|
| | | | fg-fga | pct | fg-fga | pct | ft-fta | pct | off | def | tot | avg | pf | fo | ast | to | blk | stl |
| 2014-15 | 16-0 | 48/3.0 | 9-19 | .474 | 4-12 | .333 | 0-1 | .000 | 1 | 5 | 6 | 0.4 | 3 | 0 | 4 | 2 | 0 | 1 |
| 2015-16 | 2-0 | 11/5.5 | 0-3 | .000 | 0-2 | .000 | 0-0 | .000 | 0 | 1 | 1 | 0.5 | 0 | 0 | 1 | 0 | 0 | 0 |
| TOTAL | 18-0 | 59/3.3 | 9-22 | .409 | 4-14 | .286 | 0-1 | .000 | 1 | 6 | 7 | 0.4 | 3 | 0 | 5 | 2 | 0 | 1 |

20 POSTSEASONS IN 25 YEARS | FOUR NCAA SWEET 16s | 1997 ELITE EIGHT



#3 CAIRA WASHINGTON

Junior | Forward | 6-2

Brandywine, Md. | Georgetown Day

WASHINGTON'S SEASON & CAREER HIGHS

| | | SEASON | | CAREER |
|----------|----|---------------------------------|----|--------------------------------------|
| Points | 23 | vs. Grambling State, 11-14-15 | 25 | vs. Massachusetts, 2-15-14 |
| FG | 10 | 2x, Last vs. American, 11-17-15 | 10 | 5x, Last vs. American, 11-17-15 |
| FGA | 18 | vs. Grambling State, 11-14-15 | 18 | vs. Grambling State, 11-14-15 |
| 3FG | 0 | NA | 0 | NA |
| 3FGA | 0 | NA | 0 | NA |
| FT | 3 | vs. Grambling State, 11-14-15 | 7 | 2x, Last vs. Saint Joseph's, 1-22-14 |
| FTA | 5 | vs. Grambling State, 11-14-15 | 9 | at George Mason, 1-18-14 |
| Rebounds | 11 | vs. American, 11-17-15 | 16 | 2x, Last vs. Massachusetts, 2-15-14 |
| Assists | 2 | vs. American, 11-17-15 | 3 | 2x, Last vs. George Mason, 3-1-15 |
| Blocks | 3 | vs. Grambling State, 11-14-15 | 5 | 3x, Last at USF, 3-27-14 |
| Steals | 1 | vs. American, 11-17-15 | 4 | vs. Saint Louis, 3-6-15 |
| Minutes | 26 | vs. Grambling State, 11-14-15 | 37 | vs. Saint Joseph's, 1-22-14 |

CAREER

- Ranks 16th all-time at GW with 586 career rebounds.
- Has 19 career double-doubles and nine career 20-point efforts

2015-16 AS A JUNIOR

- Atlantic 10 Preseason All-Conference First Team
- Sporting News Preseason All-America Third Team
- Atlantic 10 Co-Player of the Week for the first week of the season (23p/8r vs. Grambling).
- Followed with her first-double-double of the season (21p/11r) on 10-of-12 shooting vs. American.
- Has reached the 20-point plateau in each of the first two games of the season and is shooting 66.7 percent (20-30).

2014-15 AS A SOPHOMORE

- Atlantic 10 All-Conference First Team after earning Preseason All-Conference Second Team and All-Defensive Team.
- Atlantic 10 All-Tournament Team (14.7 ppg, 9.0 rpg, 2.3 spg, .543 FG Pct.) ... Season-high 24 points on 10-of-13 shooting in quarterfinals vs. SLU.
- Averaged 18.7 points per game on 63.2 percent shooting over seven games from Dec. 21-Jan. 15 with three straight 20-point efforts against Towson, Dayton and Saint Joseph's.
- Ranked fifth in the A-10 in field goal percentage (.509), sixth in rebounding (7.7 rpg) and 17th in scoring (12.2 ppg) ... Also second in the league in offensive rebounds (3.5 rpg).
- Averaged 13.3 points per game and shot 52.6 percent against conference opponents.
- Scored in double figures 22 times with six double-doubles.

2013-14 AS A FRESHMAN

- 2014 A-10 Rookie of the Year, All-Conference Third Team and All-Rookie Team ... Tenth Colonial ever to be named A-10 Rookie of the Year but first since Kimberly Beck in 2005 ... First GW freshman to be named to an all-conference team since Erica Lawrence in 2000.
- Recorded 314 rebounds in 2013-14, a GW freshman record.
- Led the Atlantic 10 with a .562 field goal percentage (158-for-281) in 2013-14 ... Also led the A-10 in offensive rebounds (3.9 rpg) and ranked second in overall rebounds, fourth in blocks (1.2 bpg) and 12th in defensive rebounds (5.3 rpg) ... Ranked 70th in the nation in rebounding.
- Posted a team-high 12 double-doubles, second-most in the A-10, and her 13 double-digit rebound performances were also second-most in the league.
- Notched double-doubles in two of three WNIT games, recording 14 points on 6-of-10 shooting, 12 rebounds and three blocks in the first round against East Carolina and 14 points on 6-of-11 shooting, 15 rebounds and five blocks in the third round at USF.
- Named the team's Most Improved Player at the end-of-year awards banquet ... Co-recipient of the Female Rookie of the Year at the third annual Georgy Awards.

HIGH SCHOOL

- Earned All-Met honorable mention from the Washington Post and First-Team All-Independent School League as a junior, when she averaged 15.5 points and 15.1 rebounds... Selected to All-Prince George's County First Team by Gazette as a freshman at Gwynn Park High School in Brandywine, Md... Led Yellow Jackets to the Class 2A state finals that season ... Also lettered in softball and soccer.

WASHINGTON GAME-BY-GAME

| OPPONENT | GS | MIN | FG-FGA | 3FG-3FGA | FT-FTA | O | D | REB | PF | A | TO | B | S | PTS |
|-----------------|----|-----|--------|----------|--------|---|---|-----|----|---|----|---|---|-----|
| Grambling St. | * | 26 | 10-18 | 0-0 | 3-5 | 7 | 1 | 8 | 2 | 0 | 2 | 3 | 0 | 23 |
| American | * | 21 | 10-12 | 0-0 | 1-2 | 3 | 8 | 11 | 3 | 2 | 1 | 1 | 1 | 21 |
| #15/10 Stanford | | | | | | | | | | | | | | |
| Fresno State | | | | | | | | | | | | | | |
| Houston | | | | | | | | | | | | | | |
| Iowa | | | | | | | | | | | | | | |
| Wright State | | | | | | | | | | | | | | |
| FGCU | | | | | | | | | | | | | | |
| Memphis | | | | | | | | | | | | | | |
| Villanova | | | | | | | | | | | | | | |
| Iona | | | | | | | | | | | | | | |
| Illinois | | | | | | | | | | | | | | |
| Hartford | | | | | | | | | | | | | | |
| Saint Joseph's | | | | | | | | | | | | | | |
| Rhode Island | | | | | | | | | | | | | | |
| Dayton | | | | | | | | | | | | | | |
| La Salle | | | | | | | | | | | | | | |
| Duquesne | | | | | | | | | | | | | | |
| Massachusetts | | | | | | | | | | | | | | |
| George Mason | | | | | | | | | | | | | | |
| Davidson | | | | | | | | | | | | | | |
| Saint Louis | | | | | | | | | | | | | | |
| Fordham | | | | | | | | | | | | | | |
| Richmond | | | | | | | | | | | | | | |
| Dayton | | | | | | | | | | | | | | |
| St. Bonaventure | | | | | | | | | | | | | | |
| VCU | | | | | | | | | | | | | | |
| Richmond | | | | | | | | | | | | | | |
| George Mason | | | | | | | | | | | | | | |

WASHINGTON'S CAREER STATISTICS

| | | | Total | | 3-Point | | F-Throws | | Rebounds | | | | | | | | | | | Scoring | |
|---------|-------|-----------|---------|------|---------|------|----------|------|----------|-----|-----|-----|-----|----|-----|-----|-----|-----|-----|---------|--|
| Season | gp-gs | min/avg | fg-fga | pct | fg-fga | pct | ft-fta | pct | off | def | tot | avg | pf | fo | ast | to | blk | stl | pts | avg | |
| 2013-14 | 34-33 | 834/24.5 | 158-281 | .562 | 0-0 | .000 | 65-116 | .560 | 134 | 180 | 314 | 9.2 | 114 | 7 | 24 | 60 | 42 | 27 | 381 | 11.2 | |
| 2014-15 | 33-33 | 821/24.9 | 168-329 | .511 | 0-0 | .000 | 67-112 | .598 | 116 | 137 | 253 | 7.7 | 102 | 3 | 16 | 71 | 18 | 34 | 403 | 12.2 | |
| 2015-16 | 2-2 | 47/23.5 | 20-30 | .667 | 0-0 | .000 | 4-7 | .571 | 10 | 9 | 19 | 9.5 | 5 | 0 | 2 | 3 | 4 | 1 | 44 | 22.0 | |
| TOTAL | 69-68 | 1702/24.7 | 346-640 | .541 | 0-0 | .000 | 136-235 | .579 | 260 | 326 | 586 | 8.5 | 221 | 10 | 42 | 134 | 64 | 62 | 828 | 12.0 | |



#4 LAUREN CHASE

Graduate | Guard | 5-5

Bowie, Md. | Riverdale Baptist | UMBC

CHASE'S SEASON & CAREER HIGHS

| | | SEASON | CAREER |
|----------|----|---------------------------------|------------------------------------|
| Points | 4 | vs. Grambling State, 11-14-15 | 22 |
| FG | 2 | vs. Grambling State, 11-14-15 | 8 |
| FGA | 5 | vs. Grambling State, 11-14-15 | 19 |
| 3FG | 0 | NA | 2 |
| 3FGA | 0 | NA | 4 |
| FT | 0 | NA | 10 |
| FTA | 0 | NA | 12 |
| Rebounds | 4 | vs. Grambling State, 11-14-15 | 9 |
| Assists | 5 | vs. American, 11-17-15 | 11 |
| Blocks | 0 | NA | 1 |
| Steals | 2 | 2x, Last vs. American, 11-17-15 | 5 |
| Minutes | 25 | vs. American, 11-17-15 | 45 |
| | | | 2x, Last vs. Fresno State, 12-6-14 |
| | | | vs. Fresno State, 12-6-14 |
| | | | at Binghamton, 1-19-12 |
| | | | 2x, Last vs. Fresno State, 12-6-14 |
| | | | at Binghamton, 1-19-12 |
| | | | vs. Coppin State, 11-14-12 |
| | | | at Vermont, 1-22-12 |
| | | | at Monmouth, 11-13-11 |
| | | | 2x, Last at New Hampshire, 1-28-12 |
| | | | 2x, Last vs. Duquesne, 1-21-15 |
| | | | 2x, Last vs. Bowie State, 11-19-14 |
| | | | vs. Coppin State, 11-14-12 |

2015-16 AS A GRAD STUDENT



2014-15 AS A SENIOR

► Saw action in 29 games and made nine starts in her first season on the court for the Colonials.

► Ranked fifth in the Atlantic 10 with 4.1 assists per game and eighth with a 1.4 assist-to-turnover ratio

2013-14 AS A JUNIOR

► Missed entire season with a concussion.

AT UMBC

► Averaged team-bests of 13.0 points and 4.3 assists per game through eight contests at UMBC before announcing her intent to transfer in December 2012...Ranked second in the America East in assists, third in scoring, seventh in free throw percentage (.717) and eighth in steals (1.9 spg) at that time.

► 2012 America East Rookie of the Year and unanimous All-Rookie Team selection...Led the Retrievers with 129 assists, most ever by a UMBC freshman and eighth all-time at UMBC...Led America East in assists (4.6 apg) and ranked second in assist-to-turnover ratio (1.2)...Helped lead UMBC to the America East title game...Four-time America East Rookie of the Week.

HIGH SCHOOL/PERSONAL

► Played for current GW assistant coach Diane Richardson at Riverdale Baptist ... A three-time Washington Post All-Met Honorable Mention ... Led the Crusaders to the No. 1 ranking in the Washington area by the Washington Post and a No. 20 ranking in the nation by ESPN in 2010.

► Father, Bryan, was inducted into the United States Flag and Touch Football League Hall of Fame in 2000.

► Graduated from GW in December 2014 after just three-and-a-half years with her bachelor's degree in criminal justice.

► Currently pursuing her master's degree in rehabilitation counseling with an emphasis in traumatic brain injuries.

► Invited to speak on a panel of concussion experts in November 2014 for the Mind Matters Challenge, an initiative of the NCAA and U.S. Department of Defense aimed at promoting self-reporting, awareness of symptoms and research about treatment of concussions in at-risk populations such as student-athletes.

CHASE GAME-BY-GAME

| OPPONENT | GS | MIN | FG-FGA | 3FG-3FGA | FT-FTA | O | D | REB | PF | A | TO | B | S | PTS |
|-----------------|----|-----|--------|----------|--------|---|---|-----|----|---|----|---|---|-----|
| Grambling St. | * | 24 | 2-5 | 0-0 | 0-0 | 0 | 4 | 4 | 2 | 3 | 8 | 0 | 2 | 4 |
| American | * | 25 | 1-4 | 0-0 | 0-0 | 0 | 2 | 2 | 0 | 5 | 3 | 0 | 2 | 2 |
| #15/10 Stanford | | | | | | | | | | | | | | |
| Fresno State | | | | | | | | | | | | | | |
| Houston | | | | | | | | | | | | | | |
| Iowa | | | | | | | | | | | | | | |
| Wright State | | | | | | | | | | | | | | |
| FGCU | | | | | | | | | | | | | | |
| Memphis | | | | | | | | | | | | | | |
| Villanova | | | | | | | | | | | | | | |
| Iona | | | | | | | | | | | | | | |
| Illinois | | | | | | | | | | | | | | |
| Hartford | | | | | | | | | | | | | | |
| Saint Joseph's | | | | | | | | | | | | | | |
| Rhode Island | | | | | | | | | | | | | | |
| Dayton | | | | | | | | | | | | | | |
| La Salle | | | | | | | | | | | | | | |
| Duquesne | | | | | | | | | | | | | | |
| Massachusetts | | | | | | | | | | | | | | |
| George Mason | | | | | | | | | | | | | | |
| Davidson | | | | | | | | | | | | | | |
| Saint Louis | | | | | | | | | | | | | | |
| Fordham | | | | | | | | | | | | | | |
| Richmond | | | | | | | | | | | | | | |
| Dayton | | | | | | | | | | | | | | |
| St. Bonaventure | | | | | | | | | | | | | | |
| VCU | | | | | | | | | | | | | | |
| Richmond | | | | | | | | | | | | | | |
| George Mason | | | | | | | | | | | | | | |

CHASE'S CAREER STATISTICS

| Year | GP-GS | Min-Avg | FG-FGA | Pct | 3FG-FGA | Pct | FT-FTA | Pct | Off | Def | Tot | Avg | PF | FO | Ast | TO | Blk | Stl | Pts | Avg |
|--------------|--------------|------------------|----------------|-------------|--------------|-------------|----------------|-------------|-----------|------------|------------|------------|------------|----------|------------|------------|----------|-----------|------------|------------|
| 2011-12* | 28-26 | 934-33.4 | 78-236 | .331 | 7-33 | .212 | 73-104 | .702 | 19 | 77 | 96 | 3.4 | 62 | 2 | 129 | 107 | 0 | 41 | 236 | 8.4 |
| 2012-13* | 8-8 | 260-32.5 | 33-79 | .418 | 5-5 | 1.000 | 33-46 | .717 | 8 | 18 | 26 | 3.3 | 21 | 0 | 34 | 41 | 0 | 15 | 104 | 13.0 |
| 2013-14 | DNP - Injury | | | | | | | | | | | | | | | | | | | |
| 2014-15 | 29/9 | 672-23.2 | 81-209 | .388 | 6-19 | .316 | 47-64 | .734 | 10 | 58 | 68 | 2.3 | 67 | 0 | 120 | 86 | 2 | 34 | 215 | 7.4 |
| 2015-16 | 2/2 | 49-24.5 | 3-9 | .333 | 0-0 | .000 | 0-0 | .000 | 0 | 6 | 6 | 3.0 | 2 | 0 | 8 | 11 | 0 | 4 | 6 | 3.0 |
| TOTAL | 67-45 | 1915-28.6 | 195-533 | .366 | 18-57 | .316 | 153-214 | .715 | 37 | 159 | 196 | 2.9 | 152 | 2 | 291 | 245 | 2 | 94 | 561 | 8.4 |

*at UMBC

20 POSTSEASONS IN 25 YEARS | FOUR NCAA SWEET 16s | 1997 ELITE EIGHT



#5 AALIYAH BROWN

Senior | Guard | 5-8

League City, Texas | Clear Springs

BROWN'S SEASON & CAREER HIGHS

| | | SEASON | CAREER |
|----------|----|--------------------------------------|--------|
| Points | 3 | vs. Grambling State, 11-14-15 | 14 |
| FG | 1 | vs. Grambling State, 11-14-15 | 5 |
| FGA | 3 | vs. Grambling State, 11-14-15 | 10 |
| 3FG | 1 | vs. Grambling State, 11-14-15 | 3 |
| 3FGA | 3 | vs. Grambling State, 11-14-15 | 7 |
| FT | 2 | vs. American, 11-17-15 | 5 |
| FTA | 3 | vs. American, 11-17-15 | 7 |
| Rebounds | 1 | 2x, Last vs. American, 11-17-15 | 5 |
| Assists | 1 | 2x, Last vs. American, 11-17-15 | 2 |
| Blocks | 0 | NA | 1 |
| Steals | 1 | vs. Grambling State, 11-14-15 | 7 |
| Minutes | 12 | 2x, Last vs. American, 11-17-15 | 26 |
| | | vs. Bluefield State, 12-31-13 | |
| | | vs. Bluefield State, 12-31-13 | |
| | | vs. Jacksonville State, 12-1-13 | |
| | | vs. Grambling State, 11-24-14 | |
| | | vs. Jacksonville State, 12-1-13 | |
| | | vs. Auburn, 12-12-12 | |
| | | vs. Auburn, 12-12-12 | |
| | | at Saint Joseph's, 1-5-14 | |
| | | 5x, Last vs. Grambling St., 11-24-14 | |
| | | 2x, Last at Saint Joseph's, 1-5-14 | |
| | | vs. Bluefield State, 12-31-13 | |
| | | vs. Jacksonville State, 12-1-13 | |

2015-16 AS A SENIOR

2014-15 AS A JUNIOR

► Saw action in 21 games and averaged 1.4 points and 0.6 rebounds in 4.4 minutes per contest ... Made 9-of-27 three-point attempts.

2013-14 AS A SOPHOMORE

► Saw action in 29 games and averaged 3.2 points and 1.3 rebounds in 8.4 minutes per contest.

► Posted career highs of 14 points on 5-of-9 shooting and seven steals against Bluefield State (Dec. 31) ... The seven steals were a season high for the Colonials and matched the 15th-highest single-game total in program history.

2012-13 AS A FRESHMAN

► Saw action in 25 games in her inaugural season and averaged 2.2 points and 1.0 rebounds in 8.9 minutes per contest ... Made 10-of-32 three-point attempts.

HIGH SCHOOL/PERSONAL

► Named Defensive Player of the Year by the *Galveston Daily News* as a junior and senior ... A 2012 McDonald's All-America nominee ... Four-time All-District selection, including first-team each of her last three seasons ... Rated 59th on the ESPN HoopGurlz rankings of the nation's top point guard prospects ... Named to the Academic All-District Team in 2012.

► Majoring in psychology.

BROWN GAME-BY-GAME

| OPPONENT | GS | MIN | FG-FGA | 3FG-3FGA | FT-FTA | O | D | REB | PF | A | TO | B | S | PTS |
|-----------------|----|-----|--------|----------|--------|---|---|-----|----|---|----|---|---|-----|
| Grambling St. | 12 | 1-3 | 1-3 | 0-0 | 0 | 1 | 1 | 1 | 1 | 0 | 0 | 1 | | 3 |
| American | 12 | 0-1 | 0-1 | 2-3 | 0 | 1 | 1 | 4 | 1 | 1 | 0 | 0 | | 2 |
| #15/10 Stanford | | | | | | | | | | | | | | |
| Fresno State | | | | | | | | | | | | | | |
| Houston | | | | | | | | | | | | | | |
| Iowa | | | | | | | | | | | | | | |
| Wright State | | | | | | | | | | | | | | |
| FGCU | | | | | | | | | | | | | | |
| Memphis | | | | | | | | | | | | | | |
| Villanova | | | | | | | | | | | | | | |
| Iona | | | | | | | | | | | | | | |
| Illinois | | | | | | | | | | | | | | |
| Hartford | | | | | | | | | | | | | | |
| Saint Joseph's | | | | | | | | | | | | | | |
| Rhode Island | | | | | | | | | | | | | | |
| Dayton | | | | | | | | | | | | | | |
| La Salle | | | | | | | | | | | | | | |
| Duquesne | | | | | | | | | | | | | | |
| Massachusetts | | | | | | | | | | | | | | |
| George Mason | | | | | | | | | | | | | | |
| Davidson | | | | | | | | | | | | | | |
| Saint Louis | | | | | | | | | | | | | | |
| Fordham | | | | | | | | | | | | | | |
| Richmond | | | | | | | | | | | | | | |
| Dayton | | | | | | | | | | | | | | |
| St. Bonaventure | | | | | | | | | | | | | | |
| VCU | | | | | | | | | | | | | | |
| Richmond | | | | | | | | | | | | | | |
| George Mason | | | | | | | | | | | | | | |

BROWN'S CAREER STATISTICS

| | | | Total | | 3-Point | | F-Throws | | Rebounds | | | | | | | | | | | Scoring | |
|---------|-------|---------|--------|------|---------|------|----------|------|----------|-----|-----|-----|----|----|-----|----|-----|-----|-----|---------|--|
| Season | gp-gs | min/avg | fg-fga | pct | fg-fga | pct | ft-fga | pct | off | def | tot | avg | pf | fo | ast | to | blk | stl | pts | avg | |
| 2012-13 | 25-0 | 223/8.9 | 18-54 | .333 | 10-32 | .313 | 10-16 | .625 | 8 | 16 | 24 | 1.0 | 18 | 0 | 10 | 10 | 1 | 11 | 56 | 2.2 | |
| 2013-14 | 29-0 | 243/8.4 | 30-94 | .319 | 18-57 | .316 | 16-21 | .762 | 15 | 22 | 37 | 1.3 | 28 | 0 | 11 | 22 | 1 | 20 | 94 | 3.2 | |
| 2014-15 | 21-0 | 92/4.4 | 9-31 | .290 | 9-27 | .333 | 3-7 | .429 | 1 | 11 | 12 | 0.6 | 16 | 0 | 7 | 7 | 0 | 1 | 30 | 1.4 | |
| 2015-16 | 2-0 | 24/12.0 | 1-4 | .250 | 1-4 | .250 | 2-3 | .667 | 0 | 2 | 2 | 1.0 | 5 | 0 | 2 | 1 | 0 | 1 | 5 | 2.5 | |
| TOTAL | 77-0 | 582/7.6 | 58-183 | .317 | 38-120 | .317 | 31-47 | .660 | 24 | 51 | 75 | 1.0 | 67 | 0 | 30 | 40 | 2 | 33 | 185 | 2.4 | |

20 POSTSEASONS IN 25 YEARS | FOUR NCAA SWEET 16s | 1997 ELITE EIGHT



#13 SHANNON CRANSHAW

Junior | Guard | 5-9

Ormond Beach, Fla. | Father Lopez

CRANSHAW'S SEASON & CAREER HIGHS

| | | SEASON | | CAREER |
|----------|----|-------------------------------|----|------------------------------------|
| Points | 15 | vs. Grambling State, 11-14-15 | 15 | vs. Grambling State, 11-14-15 |
| FG | 5 | vs. Grambling State, 11-14-15 | 5 | vs. Grambling State, 11-14-15 |
| FGA | 5 | vs. Grambling State, 11-14-15 | 14 | vs. Georgetown, 12-9-14 |
| 3FG | 5 | vs. Grambling State, 11-14-15 | 5 | vs. Grambling State, 11-14-15 |
| 3FGA | 5 | vs. Grambling State, 11-14-15 | 10 | vs. Georgetown, 12-9-14 |
| FT | 1 | vs. American, 11-17-15 | 4 | 2x, Last at Rhode Island, 1-15-15 |
| FTA | 2 | vs. American, 11-17-15 | 6 | vs. Jackson State, 11-9-13 |
| Rebounds | 2 | vs. American, 11-17-15 | 5 | 2x, Last vs. Georgetown, 12-9-14 |
| Assists | 3 | vs. American, 11-17-15 | 6 | 3x, Last at Massachusetts, 1-18-15 |
| Blocks | 0 | NA | 1 | 2x, Last vs. Dayton, 3-8-15 |
| Steals | 2 | vs. Grambling State, 11-14-15 | 3 | at VCU, 2-18-15 |
| Minutes | 24 | vs. Grambling State, 11-14-15 | 32 | vs. Georgetown, 12-9-14 |

2015-16 AS A JUNIOR

► Connected on all five of her 3-point attempts in the season opener against Grambling State, matching the second-best perfect game in program history.

2014-15 AS A SOPHOMORE

► Saw action in all 33 games and made 24 starts as a sophomore.
 ► Led the Colonials with 51 three-pointers, making her the 20th Colonial ever with more than 50 treys in a season.
 ► Ranked 15th in the A-10 with a .352 shooting percentage (51-for-145) from long distance.
 ► Averaged 6.1 points in 19.2 minutes per game ... Increased her scoring average by 4.1 points while seeing her playing time more than double from her freshman season.

2013-14 AS A FRESHMAN

► Saw action in 27 games in her rookie campaign and averaged 2.0 points, 0.7 rebounds and 1.0 assists in 8.6 minutes per contest.
 ► Impressive in her collegiate debut, recording 13 points on three 3-pointers and adding five assists in 21 minutes off the bench.

HIGH SCHOOL/PERSONAL

► Named the 2013 Class 3A State Player of the Year by the Florida Association of Basketball Coaches (FABC), Florida Athletic Coaches Association (FACA) and Florida Dairy Farmers Association.
 ► A McDonald's All-America nominee and one of eight finalists for Florida Miss Basketball and Florida Queen of the Court in 2013 ... Also named 2013 Class 3A District Player of the Year.
 ► Averaged 22.5 points, 5.2 assists and 4.2 rebounds during her senior year ... Shot 60 percent from the field and 88 percent from the foul line and made 87 three-pointers.
 ► Named First-Team All-State by the FABC and FACA, First-Team All-Central Florida by the Orlando Sentinel and First-Team All-Area by the Daytona Beach News Journal.
 ► Led the Green Waves to the 2013 Class 3A State title.
 ► Scored 2,598 points and made 324 three-pointers in her career at Father Lopez ... First player ever in Central Florida with 300 career triples.
 ► Majoring in organizational sciences.

CRANSHAW GAME-BY-GAME

| OPPONENT | GS | MIN | FG-FGA | 3FG-3FGA | FT-FTA | O | D | REB | PF | A | TO | B | S | PTS |
|-----------------|----|-----|--------|----------|--------|---|---|-----|----|---|----|---|---|-----|
| Grambling St. | * | 24 | 5-5 | 5-5 | 0-0 | 0 | 1 | 1 | 0 | 1 | 1 | 0 | 2 | 15 |
| American | * | 23 | 0-4 | 0-3 | 1-2 | 1 | 1 | 2 | 1 | 3 | 2 | 0 | 1 | 1 |
| #15/10 Stanford | | | | | | | | | | | | | | |
| Fresno State | | | | | | | | | | | | | | |
| Houston | | | | | | | | | | | | | | |
| Iowa | | | | | | | | | | | | | | |
| Wright State | | | | | | | | | | | | | | |
| FGCU | | | | | | | | | | | | | | |
| Memphis | | | | | | | | | | | | | | |
| Villanova | | | | | | | | | | | | | | |
| Iona | | | | | | | | | | | | | | |
| Illinois | | | | | | | | | | | | | | |
| Hartford | | | | | | | | | | | | | | |
| Saint Joseph's | | | | | | | | | | | | | | |
| Rhode Island | | | | | | | | | | | | | | |
| Dayton | | | | | | | | | | | | | | |
| La Salle | | | | | | | | | | | | | | |
| Duquesne | | | | | | | | | | | | | | |
| Massachusetts | | | | | | | | | | | | | | |
| George Mason | | | | | | | | | | | | | | |
| Davidson | | | | | | | | | | | | | | |
| Saint Louis | | | | | | | | | | | | | | |
| Fordham | | | | | | | | | | | | | | |
| Richmond | | | | | | | | | | | | | | |
| Dayton | | | | | | | | | | | | | | |
| St. Bonaventure | | | | | | | | | | | | | | |
| VCU | | | | | | | | | | | | | | |
| Richmond | | | | | | | | | | | | | | |
| George Mason | | | | | | | | | | | | | | |

CRANSHAW'S CAREER STATISTICS

| | | | Total | | 3-Point | | F-Throws | | Rebounds | | | | | | | | | | | Scoring | |
|---------|-------|----------|--------|------|---------|------|----------|------|----------|-----|-----|-----|----|----|-----|----|-----|-----|-----|---------|--|
| Season | gp-gs | min/avg | fg-fga | pct | fg-fga | pct | ft-fga | pct | off | def | tot | avg | pf | fo | ast | to | blk | stl | pts | avg | |
| 2013-14 | 27-0 | 233/8.6 | 17-60 | .283 | 9-37 | .243 | 12-18 | .667 | 4 | 15 | 19 | 0.7 | 25 | 0 | 26 | 25 | 0 | 5 | 55 | 2.0 | |
| 2014-15 | 33-24 | 632/19.2 | 68-186 | .366 | 51-145 | .352 | 13-21 | .619 | 11 | 43 | 54 | 1.6 | 36 | 0 | 62 | 50 | 2 | 20 | 200 | 6.1 | |
| 2015-16 | 2-2 | 47/23.5 | 5-9 | .556 | 5-8 | .625 | 1-2 | .500 | 1 | 2 | 3 | 1.5 | 1 | 0 | 4 | 3 | 0 | 3 | 16 | 8.0 | |
| TOTAL | 62-26 | 912/14.7 | 90-255 | .353 | 65-190 | .342 | 26-41 | .634 | 16 | 60 | 76 | 1.2 | 62 | 0 | 92 | 78 | 2 | 28 | 271 | 4.4 | |

20 POSTSEASONS IN 25 YEARS | FOUR NCAA SWEET 16s | 1997 ELITE EIGHT



#14 DALACY ANDERSON

Senior | Forward | 6-1
Bolingbrook, Ill. | Bolingbrook

ANDERSON'S SEASON & CAREER HIGHS

| | | SEASON | | CAREER |
|----------|---|---------------------------------|----|--------------------------------------|
| Points | 7 | vs. American, 11-17-15 | 14 | vs. Bluefield State, 12-31-13 |
| FG | 3 | vs. American, 11-17-15 | 6 | 2x, Last vs. Bluefield St., 12-31-13 |
| FGA | 4 | vs. American, 11-17-15 | 10 | vs. Jacksonville State, 12-1-13 |
| 3FG | 1 | vs. American, 11-17-15 | 1 | 5x, Last vs. American, 11-17-15 |
| 3FGA | 1 | vs. American, 11-17-15 | 2 | at Fordham, 2-13-13 |
| FT | 0 | NA | 5 | vs. Dayton, 3-8-14 |
| FTA | 4 | vs. American, 11-17-15 | 6 | vs. Dayton, 3-8-14 |
| Rebounds | 2 | vs. American, 11-17-15 | 8 | vs. Massachusetts, 2-15-14 |
| Assists | 1 | vs. Grambling State, 11-14-15 | 3 | vs. VCU, 2-13-14 |
| Blocks | 0 | NA | 2 | at Towson, 12-31-14 |
| Steals | 0 | NA | 2 | 3x, Last at American, 11-17-14 |
| Minutes | 7 | 2x, Last vs. American, 11-17-15 | 25 | vs. Massachusetts, 2-15-14 |

2015-16 AS A SENIOR

► Scored 7 points on 3-of-4 shooting in seven minutes against American.

2014-15 AS A JUNIOR

► Saw action in 25 games and averaged 1.2 points and 1.4 rebounds in 8.2 minutes per contest ... Shot 37.5 percent (12-for-32) from the floor

2013-14 AS A SOPHOMORE

► Saw action in 33 games and averaged 2.8 points and 2.0 rebounds in 13.1 minutes per contest in 2013-14 ... Shot 46.2 percent (42-for-91) from the floor.

► Scored a career-high 14 points against Bluefield State.

► Pulled down a career-best eight rebounds in a career-high 25 minutes against UMass.

2012-13 AS A FRESHMAN

► Saw action in 22 games in her inaugural season and averaged 0.7 points and 0.7 rebounds in 6.1 minutes per contest.

HIGH SCHOOL/PERSONAL

► Helped lead Bolingbrook High School to three straight state titles from 2009-11...The Raiders went 29-2 during the 2010-11 season and was ranked No. 2 in the ESPNHS Powderade Fabe 50 team rankings.

► Rated as the top forward in the state of Illinois by Max Preps and the 34th-best forward in the nation by ESPN HoopGurlz.

► Garnered the Southwest Suburban Conference Athletics Academic All-Conference Award as a senior.

► Majoring in marketing ... Held an internship at the Department of State's White House Liaison's Office in the summer of 2015.

ANDERSON GAME-BY-GAME

| OPPONENT | GS | MIN | FG-FGA | 3FG-3FGA | FT-FTA | O | D | REB | PF | A | TO | B | S | PTS |
|-----------------|----|-----|--------|----------|--------|---|---|-----|----|---|----|---|---|-----|
| Grambling St. | 7 | 1-3 | 0-0 | 0-0 | 0 | 1 | 1 | 0 | 1 | 1 | 0 | 0 | 0 | 2 |
| American | 7 | 3-4 | 1-1 | 0-4 | 2 | 0 | 2 | 0 | 0 | 1 | 0 | 0 | 0 | 7 |
| #15/10 Stanford | | | | | | | | | | | | | | |
| Fresno State | | | | | | | | | | | | | | |
| Houston | | | | | | | | | | | | | | |
| Iowa | | | | | | | | | | | | | | |
| Wright State | | | | | | | | | | | | | | |
| FGCU | | | | | | | | | | | | | | |
| Memphis | | | | | | | | | | | | | | |
| Villanova | | | | | | | | | | | | | | |
| Iona | | | | | | | | | | | | | | |
| Illinois | | | | | | | | | | | | | | |
| Hartford | | | | | | | | | | | | | | |
| Saint Joseph's | | | | | | | | | | | | | | |
| Rhode Island | | | | | | | | | | | | | | |
| Dayton | | | | | | | | | | | | | | |
| La Salle | | | | | | | | | | | | | | |
| Duquesne | | | | | | | | | | | | | | |
| Massachusetts | | | | | | | | | | | | | | |
| George Mason | | | | | | | | | | | | | | |
| Davidson | | | | | | | | | | | | | | |
| Saint Louis | | | | | | | | | | | | | | |
| Fordham | | | | | | | | | | | | | | |
| Richmond | | | | | | | | | | | | | | |
| Dayton | | | | | | | | | | | | | | |
| St. Bonaventure | | | | | | | | | | | | | | |
| VCU | | | | | | | | | | | | | | |
| Richmond | | | | | | | | | | | | | | |
| George Mason | | | | | | | | | | | | | | |

ANDERSON'S CAREER STATISTICS

| | | | Total | | 3-Point | | F-Throws | | Rebounds | | | | | | | | | | | Scoring | |
|---------|-------|----------|--------|------|---------|-------|----------|------|----------|-----|-----|-----|----|----|-----|----|-----|-----|-----|---------|--|
| Season | gp-gs | min/avg | fg-fga | pct | fg-fga | pct | ft-fga | pct | off | def | tot | avg | pf | fo | ast | to | blk | stl | pts | avg | |
| 2012-13 | 22-0 | 135/6.1 | 7-25 | .280 | 1-9 | .111 | 0-2 | .000 | 9 | 7 | 16 | 0.7 | 6 | 0 | 2 | 9 | 2 | 5 | 15 | 0.7 | |
| 2013-14 | 33-0 | 432/13.1 | 42-91 | .462 | 1-3 | .333 | 9-20 | .450 | 30 | 35 | 65 | 2.0 | 36 | 0 | 11 | 16 | 5 | 6 | 94 | 2.8 | |
| 2014-15 | 25-0 | 204/8.2 | 12-32 | .375 | 2-5 | .400 | 4-5 | .800 | 15 | 19 | 34 | 1.4 | 12 | 0 | 1 | 8 | 5 | 5 | 30 | 1.2 | |
| 2015-16 | 2-0 | 14/7.0 | 4-7 | .571 | 1-1 | 1.000 | 0-4 | .000 | 2 | 1 | 3 | 1.5 | 0 | 0 | 1 | 2 | 0 | 0 | 9 | 4.5 | |
| TOTAL | 82-0 | 785/9.6 | 65-155 | .419 | 5-18 | .278 | 13-31 | .419 | 56 | 62 | 118 | 1.4 | 54 | 0 | 15 | 35 | 12 | 16 | 148 | 1.8 | |

20 POSTSEASONS IN 25 YEARS | FOUR NCAA SWEET 16s | 1997 ELITE EIGHT



#15 Mia FARMER

Sophomore | Guard | 5-8
Philadelphia, Pa. | Cardinal O'Hara

FARMER'S SEASON & CAREER HIGHS

| | | SEASON | | CAREER |
|----------|----|-------------------------------|----|---------------------------------|
| Points | 6 | vs. Grambling State, 11-14-15 | 11 | vs. Bowie State, 11-19-14 |
| FG | 2 | vs. Grambling State, 11-14-15 | 4 | vs. Bowie State, 11-19-14 |
| FGA | 5 | vs. Grambling State, 11-14-15 | 9 | vs. Bowie State, 11-19-14 |
| 3FG | 2 | vs. Grambling State, 11-14-15 | 3 | vs. Bowie State, 11-19-14 |
| 3FGA | 4 | vs. Grambling State, 11-14-15 | 7 | vs. Bowie State, 11-19-14 |
| FT | 0 | NA | 1 | vs. Duquesne, 1-21-15 |
| FTA | 0 | NA | 2 | vs. Duquesne, 1-21-15 |
| Rebounds | 1 | vs. Grambling State, 11-14-15 | 3 | vs. George Mason, 3-1-15 |
| Assists | 1 | vs. American, 11-17-15 | 2 | vs. Grambling State, 11-24-14 |
| Blocks | 0 | NA | 1 | 2x, Last vs. Davidson, 2-5-15 |
| Steals | 1 | vs. American, 11-17-15 | 1 | 2x, Last vs. American, 11-17-15 |
| Minutes | 11 | vs. Grambling State, 11-14-15 | 14 | vs. Bowie State, 11-19-14 |

2015-16 AS A SOPHOMORE

► Scored six points on a pair of 3-pointers in 11 minutes in the season opener against Grambling State.

2014-15 AS A FRESHMAN

► Saw action in 21 games and averaged 1.4 points and 0.6 rebounds in 4.9 minutes per game during her rookie campaign ... Made 9-of-30 three-point attempts on the season.

HIGH SCHOOL/PERSONAL

► 2014 Daily Times All-Delco Player of the Year and Philadelphia Catholic League MVP ... Also named to the AP Pennsylvania All-State first team.

► Ranked fifth in Delaware County with 16.6 points per game as a senior.

► 2014 McDonald's All-America nominee.

► Led Cardinal O'Hara to the 2013 Philadelphia Catholic League and Philadelphia District 12 championships and the state semifinals.

► Earned All-Catholic League first team, All-State third team, All-Delco second team and All-Southern Pennsylvania honors as a junior, when she averaged 13.4 points, 4.7 assists, 6.6 rebounds and 2.0 steals per game.

► Intends to major in business.

FARMER GAME-BY-GAME

| OPPONENT | GS | MIN | FG-FGA | 3FG-3FGA | FT-FTA | O | D | REB | PF | A | TO | B | S | PTS |
|-----------------|----|-----|--------|----------|--------|---|---|-----|----|---|----|---|---|-----|
| Grambling St. | | 11 | 2-5 | 2-4 | 0-0 | 0 | 1 | 1 | 0 | 0 | 0 | 0 | 0 | 6 |
| American | | 7 | 0-1 | 0-1 | 0-0 | 0 | 0 | 0 | 0 | 1 | 0 | 0 | 1 | 0 |
| #15/10 Stanford | | | | | | | | | | | | | | |
| Fresno State | | | | | | | | | | | | | | |
| Houston | | | | | | | | | | | | | | |
| Iowa | | | | | | | | | | | | | | |
| Wright State | | | | | | | | | | | | | | |
| FGCU | | | | | | | | | | | | | | |
| Memphis | | | | | | | | | | | | | | |
| Villanova | | | | | | | | | | | | | | |
| Iona | | | | | | | | | | | | | | |
| Illinois | | | | | | | | | | | | | | |
| Hartford | | | | | | | | | | | | | | |
| Saint Joseph's | | | | | | | | | | | | | | |
| Rhode Island | | | | | | | | | | | | | | |
| Dayton | | | | | | | | | | | | | | |
| La Salle | | | | | | | | | | | | | | |
| Duquesne | | | | | | | | | | | | | | |
| Massachusetts | | | | | | | | | | | | | | |
| George Mason | | | | | | | | | | | | | | |
| Davidson | | | | | | | | | | | | | | |
| Saint Louis | | | | | | | | | | | | | | |
| Fordham | | | | | | | | | | | | | | |
| Richmond | | | | | | | | | | | | | | |
| Dayton | | | | | | | | | | | | | | |
| St. Bonaventure | | | | | | | | | | | | | | |
| VCU | | | | | | | | | | | | | | |
| Richmond | | | | | | | | | | | | | | |
| George Mason | | | | | | | | | | | | | | |

FARMER'S CAREER STATISTICS

| | | | Total | | 3-Point | | F-Throws | | Rebounds | | | | | | | | | | | Scoring | |
|---------|-------|---------|--------|------|---------|------|----------|------|----------|-----|-----|-----|----|----|-----|----|-----|-----|-----|---------|--|
| Season | gp-gs | min/avg | fg-fga | pct | fg-fga | pct | ft-fa | pct | off | def | tot | avg | pf | fo | ast | to | blk | stl | pts | avg | |
| 2014-15 | 21-0 | 103/4.9 | 10-32 | .313 | 9-30 | .300 | 1-3 | .333 | 4 | 9 | 13 | 0.6 | 9 | 0 | 5 | 2 | 2 | 1 | 30 | 1.4 | |
| 2015-16 | 2-0 | 18/9.0 | 2-6 | .333 | 2-5 | .400 | 0-0 | .000 | 0 | 1 | 1 | 0.5 | 0 | 0 | 1 | 0 | 0 | 1 | 6 | 3.0 | |
| TOTAL | 23-0 | 121/5.3 | 12-38 | .316 | 11-35 | .314 | 1-3 | .333 | 4 | 10 | 14 | 0.6 | 9 | 0 | 6 | 2 | 2 | 2 | 36 | 1.6 | |

20 POSTSEASONS IN 25 YEARS | FOUR NCAA SWEET 16s | 1997 ELITE EIGHT



#20 HANNAH SCHAIBLE

Junior | Guard | 5-9
Orlando, Fla. | Dr. Phillips

SCHAIBLE'S SEASON & CAREER HIGHS

| | | SEASON | | CAREER |
|----------|---|--------|----|-----------------------------------|
| Points | 0 | NA | 18 | vs. George Mason, 3-1-15 |
| FG | 0 | NA | 8 | vs. George Mason, 3-1-15 |
| FGA | 0 | NA | 17 | vs. Gonzaga, 3-20-15 |
| 3FG | 0 | NA | 2 | 6x, Last at VCU, 2-18-15 |
| 3FGA | 0 | NA | 4 | 3x, Last at Dayton, 1-16-14 |
| FT | 0 | NA | 10 | vs. Dayton, 3-8-14 |
| FTA | 0 | NA | 12 | vs. East Carolina, 3-19-14 |
| Rebounds | 0 | NA | 12 | vs. East Carolina, 3-19-14 |
| Assists | 0 | NA | 7 | vs. Fordham, 2-21-15 |
| Blocks | 0 | NA | 3 | vs. Saint Mary's, 12-21-14 |
| Steals | 0 | NA | 5 | 2x, Last at George Mason, 1-31-15 |
| Minutes | 0 | NA | 36 | 2x, Last vs. Georgetown, 12-9-14 |

2015-16 AS A JUNIOR

2014-15 AS A SOPHOMORE

- Atlantic 10 All-Championship Team
- Started all 33 games and ranked third on the team in scoring (9.2 ppg) and fourth in rebounding (5.1 rpg) ... Shot 43.7 percent (118-for-270) from the floor.
- Ranked fourth in the Atlantic 10 with 2.1 steals per game and was second on the team with 68 total steals.
- Scored in double digits 18 times.
- Led the A-10 in steals (2.6 spg) and ranked ninth with a .489 field goal percentage against conference opponents ... Also averaged 9.8 points in league games.

2013-14 AS A FRESHMAN

- Saw action in all 34 games and made 33 starts in her rookie campaign...Ranked sixth in the A-10 in steals (1.6 spg) and seventh in offensive rebounds (2.8 rpg) last season.
- Earned the start in her collegiate debut and recorded 16 points, seven rebounds and three assists in 25 minutes.

HIGH SCHOOL/PERSONAL

- Named the 2011-12 Orlando Sentinel Central Florida Female Athlete of the Year.
- Tabbed the 2013 Metro Conference Female Athlete of the Year as the top female athlete of 19 public high schools in Orange County...Averaged 15.4 points, 8.4 rebounds and 4.6 assists, shot .585 from the field and made 38 three-pointers as a senior...Led the Panthers to three straight state championships from 2011-13 and two National Tournament titles in 2011 and 2013, earning MVP both years.
- Also a standout in volleyball and flag football at Dr. Phillips ... Led the Panthers to a flag football state title in 2011 and back to the finals in 2012 ... Three-time Orlando Sentinel Central Florida Flag Football Player of the Year and the Florida Dairy Farmers' 2011 Miss Flag Football.
- Has an older sister, Rian, and a twin brother, Matthew.

SCHAIBLE GAME-BY-GAME

| OPPONENT | GS | MIN | FG-FGA | 3FG-3FGA | FT-FTA | O | D | REB | PF | A | TO | B | S | PTS |
|-----------------|----|-----|--------|----------|--------|---|---|-----|----|---|----|---|---|-----|
| Grambling St. | | DNP | | | | | | | | | | | | |
| American | | DNP | | | | | | | | | | | | |
| #15/10 Stanford | | | | | | | | | | | | | | |
| Fresno State | | | | | | | | | | | | | | |
| Houston | | | | | | | | | | | | | | |
| Iowa | | | | | | | | | | | | | | |
| Wright State | | | | | | | | | | | | | | |
| FGCU | | | | | | | | | | | | | | |
| Memphis | | | | | | | | | | | | | | |
| Villanova | | | | | | | | | | | | | | |
| Iona | | | | | | | | | | | | | | |
| Illinois | | | | | | | | | | | | | | |
| Hartford | | | | | | | | | | | | | | |
| Saint Joseph's | | | | | | | | | | | | | | |
| Rhode Island | | | | | | | | | | | | | | |
| Dayton | | | | | | | | | | | | | | |
| La Salle | | | | | | | | | | | | | | |
| Duquesne | | | | | | | | | | | | | | |
| Massachusetts | | | | | | | | | | | | | | |
| George Mason | | | | | | | | | | | | | | |
| Davidson | | | | | | | | | | | | | | |
| Saint Louis | | | | | | | | | | | | | | |
| Fordham | | | | | | | | | | | | | | |
| Richmond | | | | | | | | | | | | | | |
| Dayton | | | | | | | | | | | | | | |
| St. Bonaventure | | | | | | | | | | | | | | |
| VCU | | | | | | | | | | | | | | |
| Richmond | | | | | | | | | | | | | | |
| George Mason | | | | | | | | | | | | | | |

SCHAIBLE'S CAREER STATISTICS

| Season | Total | | | 3-Point | | F-Throws | | Rebounds | | | | Scoring | | | | | | |
|---------|-------|-----------|---------|---------|--------|----------|---------|----------|-----|-----|-----|---------|-----|----|-----|-----|-----|-----|
| | gp-gs | min/avg | fg-fga | pct | fg-fga | pct | ft-fga | pct | off | def | tot | avg | pf | fo | ast | to | blk | stl |
| 2013-14 | 34-33 | 867/25.5 | 84-208 | .404 | 13-45 | .289 | 63-98 | .643 | 95 | 106 | 201 | 5.9 | 97 | 2 | 55 | 48 | 4 | 56 |
| 2014-15 | 33-33 | 819/24.8 | 118-270 | .437 | 13-41 | .317 | 54-77 | .701 | 68 | 99 | 167 | 5.1 | 79 | 1 | 71 | 63 | 8 | 68 |
| TOTAL | 67-66 | 1686/25.2 | 202-478 | .423 | 26-86 | .302 | 117-175 | .669 | 163 | 205 | 368 | 5.5 | 176 | 3 | 126 | 111 | 12 | 124 |

20 POSTSEASONS IN 25 YEARS | FOUR NCAA SWEET 16s | 1997 ELITE EIGHT



#21 MEI-LYN BAUTISTA

Freshman | Guard | 5-6

Whitestone, N.Y. | Saint Mary's

BAUTISTA'S SEASON & CAREER HIGHS

| | | SEASON | | CAREER |
|----------|---|------------------------|---|------------------------|
| Points | 5 | vs. American, 11-17-15 | 5 | vs. American, 11-17-15 |
| FG | 2 | vs. American, 11-17-15 | 2 | vs. American, 11-17-15 |
| FGA | 2 | vs. American, 11-17-15 | 2 | vs. American, 11-17-15 |
| 3FG | 1 | vs. American, 11-17-15 | 1 | vs. American, 11-17-15 |
| 3FGA | 1 | vs. American, 11-17-15 | 1 | vs. American, 11-17-15 |
| FT | 0 | NA | 0 | NA |
| FTA | 0 | NA | 0 | NA |
| Rebounds | 1 | vs. American, 11-17-15 | 1 | vs. American, 11-17-15 |
| Assists | 1 | vs. American, 11-17-15 | 1 | vs. American, 11-17-15 |
| Blocks | 0 | NA | 0 | NA |
| Steals | 0 | NA | 0 | NA |
| Minutes | 9 | vs. American, 11-17-15 | 9 | vs. American, 11-17-15 |

2015-16 AS A FRESHMAN

► Made her collegiate debut against American and scored five points on 2-of-2 shooting, including a 3-pointer, in nine minutes off the bench.

HIGH SCHOOL/PERSONAL

► Three-time All-Long Island selection by Newsday
 ► Averaged 16 points, 12 assists and seven steals as a senior.
 ► Led Saint Mary's to back-to-back Nassau Suffolk Catholic High School Girls Athletic Association titles and state semifinals in 2014 and 2015.
 ► Intends to major in business administration.

BAUTISTA GAME-BY-GAME

| OPPONENT | GS | MIN | FG-FGA | 3FG-3FGA | FT-FTA | O | D | REB | PF | A | TO | B | S | PTS |
|-----------------|----|-----|--------|----------|--------|---|---|-----|----|---|----|---|---|-----|
| Grambling St. | | DNP | | | | | | | | | | | | |
| American | 9 | 2-2 | 1-1 | 0-0 | 0 | 1 | 1 | 1 | 1 | 1 | 0 | 0 | 5 | |
| #15/10 Stanford | | | | | | | | | | | | | | |
| Fresno State | | | | | | | | | | | | | | |
| Houston | | | | | | | | | | | | | | |
| Iowa | | | | | | | | | | | | | | |
| Wright State | | | | | | | | | | | | | | |
| FGCU | | | | | | | | | | | | | | |
| Memphis | | | | | | | | | | | | | | |
| Villanova | | | | | | | | | | | | | | |
| Iona | | | | | | | | | | | | | | |
| Illinois | | | | | | | | | | | | | | |
| Hartford | | | | | | | | | | | | | | |
| Saint Joseph's | | | | | | | | | | | | | | |
| Rhode Island | | | | | | | | | | | | | | |
| Dayton | | | | | | | | | | | | | | |
| La Salle | | | | | | | | | | | | | | |
| Duquesne | | | | | | | | | | | | | | |
| Massachusetts | | | | | | | | | | | | | | |
| George Mason | | | | | | | | | | | | | | |
| Davidson | | | | | | | | | | | | | | |
| Saint Louis | | | | | | | | | | | | | | |
| Fordham | | | | | | | | | | | | | | |
| Richmond | | | | | | | | | | | | | | |
| Dayton | | | | | | | | | | | | | | |
| St. Bonaventure | | | | | | | | | | | | | | |
| VCU | | | | | | | | | | | | | | |
| Richmond | | | | | | | | | | | | | | |
| George Mason | | | | | | | | | | | | | | |

BAUTISTA'S CAREER STATISTICS

| Season | gp-gs | min/avg | Total fg-fga pct | 3-Point fg-fga pct | F-Throws ft-fta pct | Rebounds off def tot avg | pf fo ast to blk stl | Scoring pts avg |
|---------|-------|---------|------------------|--------------------|---------------------|--------------------------|----------------------|-----------------|
| 2015-16 | 1-0 | 9/9.0 | 2-2 1.000 | 1-1 1.000 | 0-0 .000 | 0 1 1 1.0 | 1 0 1 1 0 0 | 5 5.0 |
| TOTAL | 1-0 | 9/9.0 | 2-2 1.000 | 1-1 1.000 | 0-0 .000 | 0 1 1 1.0 | 1 0 1 1 0 0 | 5 5.0 |

20 POSTSEASONS IN 25 YEARS | FOUR NCAA SWEET 16s | 1997 ELITE EIGHT



2015-16 AS A SOPHOMORE



2014-15 AS A FRESHMAN

► Saw action in 15 games and averaged 0.8 points and 0.9 rebounds in 4.5 minutes per contest during her rookie campaign

HIGH SCHOOL/PERSONAL

► Selected to the All-South Jersey First Team, the All-Conference first team and the Star-Ledger All-Group 3 Third Team in 2014 after averaging 20.7 points and 3.7 assists per game as a senior.

► A 2014 McDonald's All-America nominee.

► Graduated as Winslow Township's all-time leading scorer with 1,562 career points.

► Selected to play in the New Jersey Scholastic Coaches Association North-South Senior All-Star Game and the South Jersey All-Carino All-Star Game.

► Broke her school's single-game scoring record with 44 points against Cherry Hill East in January 2014.

► Attended the U-16 Team USA trials.

► A member of the National Honor Society.

#22 JADA MATTHEWS

Sophomore | Forward | 6-0
Sicklerville, N.J. | Winslow Township

MATTHEWS' SEASON & CAREER HIGHS

| | | SEASON | | CAREER |
|----------|---|---------------------------------|----|--------------------------------------|
| Points | 2 | 2x, Last vs. American, 11-17-15 | 4 | at Towson, 12-31-14 |
| FG | 1 | vs. American, 11-17-15 | 2 | at Towson, 12-31-14 |
| FGA | 2 | vs. American, 11-17-15 | 3 | 2x, Last at George Mason, 1-31-15 |
| 3FG | 0 | NA | 0 | NA |
| 3FGA | 1 | vs. American, 11-17-15 | 2 | at George Mason, 1-31-15 |
| FT | 2 | vs. Grambling State, 11-14-15 | 3 | vs. Bowie State, 11-19-14 |
| FTA | 2 | vs. Grambling State, 11-14-15 | 4 | vs. Bowie State, 11-19-14 |
| Rebounds | 4 | vs. Grambling State, 11-14-15 | 4 | 3x, Last vs. Grambling St., 11-14-15 |
| Assists | 0 | NA | 0 | NA |
| Blocks | 0 | NA | 0 | NA |
| Steals | 0 | NA | 1 | 4x, Last vs. George Mason, 3-1-15 |
| Minutes | 8 | vs. Grambling State, 11-14-15 | 13 | vs. Bowie State, 11-19-14 |

MATTHEWS GAME-BY-GAME

| OPPONENT | GS | MIN | FG-FGA | 3FG-3FGA | FT-FTA | O | D | REB | PF | A | TO | B | S | PTS |
|-----------------|----|-----|--------|----------|--------|---|---|-----|----|---|----|---|---|-----|
| Grambling St. | 8 | 0-1 | 0-0 | 2-2 | 2 | 2 | 4 | 1 | 0 | 1 | 0 | 0 | 2 | 2 |
| American | 6 | 1-2 | 0-1 | 0-0 | 0 | 0 | 0 | 1 | 0 | 2 | 0 | 0 | 2 | 2 |
| #15/10 Stanford | | | | | | | | | | | | | | |
| Fresno State | | | | | | | | | | | | | | |
| Houston | | | | | | | | | | | | | | |
| Iowa | | | | | | | | | | | | | | |
| Wright State | | | | | | | | | | | | | | |
| FGCU | | | | | | | | | | | | | | |
| Memphis | | | | | | | | | | | | | | |
| Villanova | | | | | | | | | | | | | | |
| Iona | | | | | | | | | | | | | | |
| Illinois | | | | | | | | | | | | | | |
| Hartford | | | | | | | | | | | | | | |
| Saint Joseph's | | | | | | | | | | | | | | |
| Rhode Island | | | | | | | | | | | | | | |
| Dayton | | | | | | | | | | | | | | |
| La Salle | | | | | | | | | | | | | | |
| Duquesne | | | | | | | | | | | | | | |
| Massachusetts | | | | | | | | | | | | | | |
| George Mason | | | | | | | | | | | | | | |
| Davidson | | | | | | | | | | | | | | |
| Saint Louis | | | | | | | | | | | | | | |
| Fordham | | | | | | | | | | | | | | |
| Richmond | | | | | | | | | | | | | | |
| Dayton | | | | | | | | | | | | | | |
| St. Bonaventure | | | | | | | | | | | | | | |
| VCU | | | | | | | | | | | | | | |
| Richmond | | | | | | | | | | | | | | |
| George Mason | | | | | | | | | | | | | | |

MATTHEWS' CAREER STATISTICS

| | | | Total | | 3-Point | | F-Throws | | Rebounds | | | | | | | | | | | Scoring | |
|---------|-------|---------|--------|------|---------|------|----------|-------|----------|-----|-----|-----|----|----|-----|----|-----|-----|-----|---------|--|
| Season | gp-gs | min/avg | fg-fga | pct | fg-fga | pct | ft-fga | pct | off | def | tot | avg | pf | fo | ast | to | blk | stl | pts | avg | |
| 2014-15 | 15-0 | 68/4.5 | 4-16 | .250 | 0-3 | .000 | 4-8 | .500 | 5 | 9 | 14 | 0.9 | 7 | 0 | 0 | 5 | 0 | 4 | 12 | 0.8 | |
| 2015-16 | 2-0 | 14/7.0 | 1-3 | .333 | 0-1 | .000 | 2-2 | 1.000 | 2 | 2 | 4 | 2.0 | 2 | 0 | 0 | 3 | 0 | 0 | 4 | 2.0 | |
| TOTAL | 17-0 | 82/4.8 | 5-19 | .263 | 0-4 | .000 | 6-10 | .600 | 7 | 11 | 18 | 1.1 | 9 | 0 | 0 | 8 | 0 | 4 | 16 | 0.9 | |

20 POSTSEASONS IN 25 YEARS | FOUR NCAA SWEET 16s | 1997 ELITE EIGHT



#24 ALEXIS CHANDLER

Senior | Guard | 5-8
Cypress, Texas | Cy-Fair

CHANDLER'S SEASON & CAREER HIGHS

| | | SEASON | CAREER |
|----------|----|---------------------------------|--|
| Points | 2 | 2x, Last vs. American, 11-17-15 | 21 vs. Bluefield State, 12-31-13 |
| FG | 1 | 2x, Last vs. American, 11-17-15 | 7 vs. Bluefield State, 12-31-13 |
| FGA | 4 | vs. Grambling State, 11-14-15 | 11 at La Salle, 1-24-15 |
| 3FG | 0 | NA | 0 NA |
| 3FGA | 0 | NA | 1 6x, Last at Rhode Island, 1-15-15 |
| FT | 0 | NA | 7 2x, Last at Saint Joseph's, 1-5-14 |
| FTA | 0 | NA | 11 vs. Bluefield State, 12-31-13 |
| Rebounds | 9 | vs. Grambling State, 11-14-15 | 9 2x, Last vs. Grambling State, 11-14-15 |
| Assists | 2 | vs. Grambling State, 11-14-15 | 3 vs. UT Arlington, 11-9-12 |
| Blocks | 0 | NA | 1 6x, Last vs. Richmond, 1-10-15 |
| Steals | 1 | 2x, Last vs. American, 11-17-15 | 5 vs. Morgan State, 12-14-13 |
| Minutes | 19 | vs. Grambling State, 11-14-15 | 26 vs. Bluefield State, 12-31-13 |

2015-16 AS A SENIOR

► Matched her career high with nine rebounds in the season opener against Grambling State.

2014-15 AS A JUNIOR

► Saw action in 32 games and averaged 2.2 points and 1.9 rebounds in 10.7 minutes per game ... Shot 35.7 percent (30-for-84) from the floor.

2013-14 AS A SOPHOMORE

► Saw action in all 34 games and averaged 4.3 points and 2.7 rebounds in 14.9 minutes per game ... Shot 41.2 percent (47-for-114) from the floor ... Ranked fifth on the team with 28 steals.

► Recorded career highs of 21 points (7-of-10 FG) and nine rebounds against Bluefield State.

► Named the team's Most Improved Player and was the co-recipient of the Team Spirit Award at the end-of-the-year awards banquet in 2013.

2012-13 AS A FRESHMAN

► Saw action in 24 games in her inaugural season, leading all GW freshmen in scoring with 2.6 points per game and in steals (17) and assists (17) ... Averaged 14.6 minutes per game against A-10 opponents, most among Colonial rookies.

HIGH SCHOOL/PERSONAL

► Earned First-Team All-State honors as a junior ... Four-time All-District honoree, including First-Team in her last two seasons.

► Set the single-season assists record at two different schools - Cypress Ranch High School as a sophomore and St. Pius X as a junior.

► Oldest of five children - has three younger sisters, Kamia, Randi and Kish, and a younger brother, Ivory III ... Cousin, Austin Rettig, is a sophomore on the men's basketball team at University of Tampa.

► Majoring in psychology.

CHANDLER GAME-BY-GAME

| OPPONENT | GS | MIN | FG-FGA | 3FG-3FGA | FT-FTA | O | D | REB | PF | A | TO | B | S | PTS |
|-----------------|----|-----|--------|----------|--------|---|---|-----|----|---|----|---|---|-----|
| Grambling St. | 19 | 1-4 | 0-0 | 0-0 | 4 | 5 | 9 | 1 | 2 | 2 | 0 | 1 | 2 | |
| American | 16 | 1-2 | 0-0 | 0-0 | 1 | 2 | 3 | 1 | 1 | 2 | 0 | 1 | 2 | |
| #15/10 Stanford | | | | | | | | | | | | | | |
| Fresno State | | | | | | | | | | | | | | |
| Houston | | | | | | | | | | | | | | |
| Iowa | | | | | | | | | | | | | | |
| Wright State | | | | | | | | | | | | | | |
| FGCU | | | | | | | | | | | | | | |
| Memphis | | | | | | | | | | | | | | |
| Villanova | | | | | | | | | | | | | | |
| Iona | | | | | | | | | | | | | | |
| Illinois | | | | | | | | | | | | | | |
| Hartford | | | | | | | | | | | | | | |
| Saint Joseph's | | | | | | | | | | | | | | |
| Rhode Island | | | | | | | | | | | | | | |
| Dayton | | | | | | | | | | | | | | |
| La Salle | | | | | | | | | | | | | | |
| Duquesne | | | | | | | | | | | | | | |
| Massachusetts | | | | | | | | | | | | | | |
| George Mason | | | | | | | | | | | | | | |
| Davidson | | | | | | | | | | | | | | |
| Saint Louis | | | | | | | | | | | | | | |
| Fordham | | | | | | | | | | | | | | |
| Richmond | | | | | | | | | | | | | | |
| Dayton | | | | | | | | | | | | | | |
| St. Bonaventure | | | | | | | | | | | | | | |
| VCU | | | | | | | | | | | | | | |
| Richmond | | | | | | | | | | | | | | |
| George Mason | | | | | | | | | | | | | | |

CHANDLER'S CAREER STATISTICS

| COLUMBIAN COLLEGE OF ARTS & SCIENCES | | | | | | | | | | | | | | | | | | | | | |
|--------------------------------------|-------|-----------|--------|------|---------|------|----------|------|----------|-----|-----|-----|----|----|-----|-----|-----|-----|-----|---------|--|
| | | | Total | | 3-Point | | F-Throws | | Rebounds | | | | | | | | | | | Scoring | |
| Season | gp-gs | min/avg | fg-fga | pct | fg-fga | pct | ft-fa | pct | off | def | tot | avg | pf | fo | ast | to | blk | stl | pts | avg | |
| 2012-13 | 24-0 | 264/11.0 | 18-63 | .286 | 0-2 | .000 | 27-34 | .794 | 12 | 14 | 26 | 1.1 | 17 | 0 | 17 | 26 | 1 | 17 | 63 | 2.6 | |
| 2013-14 | 34-0 | 506/14.9 | 47-114 | .412 | 0-1 | .000 | 51-75 | .680 | 33 | 59 | 92 | 2.7 | 41 | 0 | 16 | 42 | 2 | 28 | 145 | 4.3 | |
| 2014-15 | 32-0 | 343/10.7 | 30-84 | .357 | 0-3 | .000 | 11-19 | .579 | 18 | 43 | 61 | 1.9 | 30 | 0 | 16 | 29 | 3 | 20 | 71 | 2.2 | |
| 2015-16 | 2-0 | 35/17.5 | 2-6 | .333 | 0-0 | .000 | 0-0 | .000 | 5 | 7 | 12 | 6.0 | 2 | 0 | 3 | 4 | 0 | 2 | 4 | 2.0 | |
| TOTAL | 92-0 | 1148/12.5 | 97-267 | .363 | 0-6 | .000 | 89-128 | .695 | 68 | 123 | 191 | 2.1 | 90 | 0 | 52 | 101 | 6 | 67 | 283 | 3.1 | |

20 POSTSEASONS IN 25 YEARS | FOUR NCAA SWEET 16s | 1997 ELITE EIGHT



#25 KELLI PRANGE

Sophomore | Forward | 6-5
Damascus, Md. | Damascus

PRANGE'S SEASON & CAREER HIGHS

| | | SEASON | CAREER |
|----------|----|---------------------------------|--|
| Points | 18 | vs. American, 11-17-15 | 24 at Florida Gulf Coast, 11-14-14 |
| FG | 6 | vs. American, 11-17-15 | 9 2x, Last vs. Grambling St., 11-24-14 |
| FGA | 11 | vs. American, 11-17-15 | 15 at American, 11-17-14 |
| 3FG | 1 | 2x, Last vs. American, 11-17-15 | 2 2x, Last vs. Fordham, 2-21-15 |
| 3FGA | 3 | vs. American, 11-17-15 | 5 at Florida Gulf Coast, 11-14-14 |
| FT | 5 | vs. American, 11-17-15 | 5 2x, Last vs. American, 11-17-15 |
| FTA | 6 | vs. American, 11-17-15 | 6 vs. American, 11-17-15 |
| Rebounds | 7 | vs. Grambling State, 11-14-15 | 12 at Florida Gulf Coast, 11-14-14 |
| Assists | 2 | vs. Grambling State, 11-14-15 | 3 vs. Richmond, 1-10-15 |
| Blocks | 2 | vs. Grambling State, 11-14-15 | 3 2x, Last vs. Gonzaga, 3-20-15 |
| Steals | 1 | vs. Grambling State, 11-14-15 | 2 3x, Last vs. Davidson, 2-5-15 |
| Minutes | 24 | vs. American, 11-17-15 | 32 at Florida Gulf Coast, 11-14-14 |

2015-16 AS A SOPHOMORE

- Has posted double-figure scoring in the first two games with a season-high 18 points against American.
- Shooting 57.9 percent (11-19) from the floor through the first two games of the season.

2014-15 AS A FRESHMAN

- Atlantic 10 All-Rookie Team selection.
- Saw action in all 33 games and made three starts during her rookie campaign ... Ranked fourth on the team in scoring (8.1 ppg) and third in rebounding (5.8 rpg).
- Ranked 15th in the Atlantic 10 with a .448 field goal percentage (108-for-241).
- Earned the start in her collegiate debut at FGCU and posted a double-double with 24 points and 12 rebounds in 32 minutes ... Named A-10 Rookie of the Week.
- Followed with 16 points and nine rebounds at American.
- Named A-10 Rookie of the Week for the second time on Jan. 19.

HIGH SCHOOL/PERSONAL

- 2014 Washington Post All-Met First Team selection after averaging 21.4 points and 11.9 rebounds per game as a senior ... Also named Maryland Gazette and Montgomery Sentinel Player of the Year and earned All-League first team honors.
- Led Damascus to the Maryland 3A state title game, where she tallied 20 points and 17 rebounds.
- Averaged 15.5 points and 11.0 rebounds per game as a junior ... Led the Swarmin' Hornets to a 23-3 record and the state semifinals in 2013 ... Earned All-County First Team, All Gazette First Team and Washington Post All-Met Fourth Team honors that season.
- Mother, Cindy Baruch, played basketball for one season at GW before transferring to George Mason.
- Older sister, Kristina, is a junior on the women's basketball team at Shepherd University.

PRANGE GAME-BY-GAME

| OPPONENT | GS | MIN | FG-FGA | 3FG-3FGA | FT-FTA | O | D | REB | PF | A | TO | B | S | PTS |
|-----------------|----|-----|--------|----------|--------|---|---|-----|----|---|----|---|---|-----|
| Grambling St. | * | 23 | 5-8 | 1-1 | 1-3 | 3 | 4 | 7 | 2 | 2 | 2 | 2 | 1 | 12 |
| American | * | 24 | 6-11 | 1-3 | 5-6 | 1 | 5 | 6 | 1 | 0 | 1 | 0 | 0 | 18 |
| #15/10 Stanford | | | | | | | | | | | | | | |
| Fresno State | | | | | | | | | | | | | | |
| Houston | | | | | | | | | | | | | | |
| Iowa | | | | | | | | | | | | | | |
| Wright State | | | | | | | | | | | | | | |
| FGCU | | | | | | | | | | | | | | |
| Memphis | | | | | | | | | | | | | | |
| Villanova | | | | | | | | | | | | | | |
| Iona | | | | | | | | | | | | | | |
| Illinois | | | | | | | | | | | | | | |
| Hartford | | | | | | | | | | | | | | |
| Saint Joseph's | | | | | | | | | | | | | | |
| Rhode Island | | | | | | | | | | | | | | |
| Dayton | | | | | | | | | | | | | | |
| La Salle | | | | | | | | | | | | | | |
| Duquesne | | | | | | | | | | | | | | |
| Massachusetts | | | | | | | | | | | | | | |
| George Mason | | | | | | | | | | | | | | |
| Davidson | | | | | | | | | | | | | | |
| Saint Louis | | | | | | | | | | | | | | |
| Fordham | | | | | | | | | | | | | | |
| Richmond | | | | | | | | | | | | | | |
| Dayton | | | | | | | | | | | | | | |
| St. Bonaventure | | | | | | | | | | | | | | |
| VCU | | | | | | | | | | | | | | |
| Richmond | | | | | | | | | | | | | | |
| George Mason | | | | | | | | | | | | | | |

PRANGE'S CAREER STATISTICS

| | | | Total | | 3-Point | | F-Throws | | Rebounds | | | | | | | | | | | Scoring | |
|---------|-------|----------|---------|------|---------|------|----------|------|----------|-----|-----|-----|----|----|-----|----|-----|-----|-----|---------|--|
| Season | gp-gs | min/avg | fg-fga | pct | fg-fga | pct | ft-fga | pct | off | def | tot | avg | pf | fo | ast | to | blk | stl | pts | avg | |
| 2014-15 | 33-3 | 618/18.7 | 108-241 | .448 | 15-51 | .294 | 36-50 | .720 | 71 | 119 | 190 | 5.8 | 38 | 1 | 22 | 45 | 17 | 20 | 267 | 8.1 | |
| 2015-16 | 2-2 | 47/23.5 | 11-19 | .579 | 2-4 | .500 | 6-8 | .750 | 4 | 9 | 13 | 6.5 | 2 | 0 | 2 | 3 | 2 | 1 | 30 | 15.0 | |
| TOTAL | 35-5 | 665/19.0 | 119-260 | .458 | 17-55 | .309 | 42-58 | .724 | 75 | 128 | 203 | 5.8 | 40 | 1 | 24 | 48 | 19 | 21 | 297 | 8.5 | |

20 POSTSEASONS IN 25 YEARS | FOUR NCAA SWEET 16s | 1997 ELITE EIGHT



#34 BRIANNA CUMMINGS

Sophomore | Guard | 5-10
Lawrenceville, Ga. | Greater Atlanta
Christian

CUMMINGS' SEASON & CAREER HIGHS

| | | SEASON | | CAREER |
|----------|----|---------------------------------|----|--|
| Points | 8 | vs. Grambling State, 11-14-15 | 10 | 3x, Last vs. Bowie State, 11-19-14 |
| FG | 4 | vs. Grambling State, 11-14-15 | 4 | 3x, Last vs. Grambling State, 11-14-15 |
| FGA | 9 | vs. Grambling State, 11-14-15 | 9 | vs. Grambling State, 11-14-15 |
| 3FG | 0 | NA | 1 | 3x, Last at VCU, 2-18-15 |
| 3FGA | 1 | vs. Grambling State, 11-14-15 | 2 | 3x, Last at VCU, 2-18-15 |
| FT | 2 | vs. American, 11-17-15 | 5 | vs. Gonzaga, 3-20-15 |
| FTA | 4 | vs. American, 11-17-15 | 6 | vs. Gonzaga, 3-20-15 |
| Rebounds | 3 | 2x, Last vs. American, 11-17-15 | 10 | at American, 11-17-14 |
| Assists | 3 | vs. Grambling State, 11-14-15 | 5 | vs. Dayton, 2-8-15 |
| Blocks | 1 | vs. American, 11-17-15 | 3 | vs. St. Bonaventure, 2-15-15 |
| Steals | 2 | vs. Grambling State, 11-14-15 | 3 | vs. Purdue, 11-29-14 |
| Minutes | 16 | vs. American, 11-17-15 | 29 | at Richmond, 2-26-15 |

2015-16 AS A SOPHOMORE

- Scored eight points and added three assists in the season opener vs. Grambling State.

2014-15 AS A FRESHMAN

- Saw action in 31 games and averaged 4.5 points and 3.1 rebounds in 19.2 minutes per contest as a rookie ... Shot 38.5 percent (52-for-135) from the floor and 75 percent (33-for-44) from the foul line.
- Impressive in her collegiate debut with 10 points on 4-of-5 shooting in 18 minutes at Florida Gulf Coast (Nov. 14).
- Notched her first career double-double with 10 points and 10 rebounds at American (Nov. 17).
- Scored nine points in A-10 Championship game against Dayton (March 8) and against Gonzaga in the NCAA Tournament (March 20).
- Received the team's Academic Success Award at the end-of-the-year banquet.

HIGH SCHOOL/PERSONAL

- 2014 Gwinnett Daily Post Player of the Year after leading Gwinnett County with 23.0 points per game and ranked in the top three in rebounds (11.1 rpg) and steals (4.0 spg).
- Averaged 32.0 points per game in the postseason as a senior ... Led Greater Atlanta Christian School to a 22-7 record and the Class AA state quarterfinals that season.
- Selected to play in the Gwinnett Senior All-Star Game.
- Also named All-Metro Gwinnett Player of the Year and Class AA State Player of the Year by the Atlanta Journal Constitution, as well as County Player of the Year and All-County Academic by the Gwinnett Tipoff Club and Gwinnett County Super Six in 2014.
- Finished her high school career with 1,948 points and 902 rebounds.
- Averaged 18.5 points, 9.0 rebounds, 3.5 steals and 2.2 blocks as a junior en route to first-team All-County and second-team All-Metro honors.
- Ranked 25th in the nation at her position by ESPN HoopGurlz.
- Four-time first-team All-Region selection.
- MVP of the 2013 Georgia Athletic Coaches Association North/South Junior All-Star Game.
- 2013 GACS Female Athlete of the Year.
- Also lettered in volleyball and track and field (high jump) in high school.
- A member of the National Honors Society and the Math Honors Society and a President's List student ... GACS Scholar-Athlete.

CUMMINGS GAME-BY-GAME

| OPPONENT | GS | MIN | FG-FGA | 3FG-3FGA | FT-FTA | O | D | REB | PF | A | TO | B | S | PTS |
|-----------------|----|-----|--------|----------|--------|---|---|-----|----|---|----|---|---|-----|
| Grambling St. | 15 | 4-9 | 0-1 | 0-0 | 3 | 0 | 3 | 2 | 3 | 3 | 0 | 2 | | 8 |
| American | 16 | 1-2 | 0-0 | 2-4 | 0 | 3 | 3 | 0 | 1 | 0 | 1 | 1 | | 4 |
| #15/10 Stanford | | | | | | | | | | | | | | |
| Fresno State | | | | | | | | | | | | | | |
| Houston | | | | | | | | | | | | | | |
| Iowa | | | | | | | | | | | | | | |
| Wright State | | | | | | | | | | | | | | |
| FGCU | | | | | | | | | | | | | | |
| Memphis | | | | | | | | | | | | | | |
| Villanova | | | | | | | | | | | | | | |
| Iona | | | | | | | | | | | | | | |
| Illinois | | | | | | | | | | | | | | |
| Hartford | | | | | | | | | | | | | | |
| Saint Joseph's | | | | | | | | | | | | | | |
| Rhode Island | | | | | | | | | | | | | | |
| Dayton | | | | | | | | | | | | | | |
| La Salle | | | | | | | | | | | | | | |
| Duquesne | | | | | | | | | | | | | | |
| Massachusetts | | | | | | | | | | | | | | |
| George Mason | | | | | | | | | | | | | | |
| Davidson | | | | | | | | | | | | | | |
| Saint Louis | | | | | | | | | | | | | | |
| Fordham | | | | | | | | | | | | | | |
| Richmond | | | | | | | | | | | | | | |
| Dayton | | | | | | | | | | | | | | |
| St. Bonaventure | | | | | | | | | | | | | | |
| VCU | | | | | | | | | | | | | | |
| Richmond | | | | | | | | | | | | | | |
| George Mason | | | | | | | | | | | | | | |

CUMMINGS' CAREER STATISTICS

| Season | gp-gs | min/avg | Total | | 3-Point | | F-Throws | | Rebounds | | | | Scoring | | | | | | | |
|---------|-------|----------|--------|------|---------|------|----------|------|----------|-----|-----|-----|---------|----|-----|----|-----|-----|-----|-----|
| | | | fg-fga | pct | fg-fga | pct | ft-fga | pct | off | def | tot | avg | pf | fo | ast | to | blk | stl | pts | avg |
| 2014-15 | 31-0 | 595/19.2 | 52-135 | .385 | 3-15 | .200 | 33-44 | .750 | 42 | 53 | 95 | 3.1 | 48 | 0 | 40 | 37 | 10 | 26 | 140 | 4.5 |
| 2015-16 | 2-0 | 31/15.5 | 5-11 | .455 | 0-1 | .000 | 2-4 | .500 | 3 | 3 | 6 | 3.0 | 2 | 0 | 4 | 3 | 1 | 3 | 12 | 6.0 |
| TOTAL | 33-0 | 626/19.0 | 57-146 | .390 | 3-16 | .188 | 35-48 | .729 | 45 | 56 | 101 | 3.1 | 50 | 0 | 44 | 40 | 11 | 29 | 152 | 4.6 |

20 POSTSEASONS IN 25 YEARS | FOUR NCAA SWEET 16s | 1997 ELITE EIGHT



#35 JONQUEL JONES

Senior | Forward | 6-4

Freeport, Bahamas | Riverdale Baptist (Md.) | Clemson

JONES' SEASON & CAREER HIGHS

| | | SEASON | CAREER |
|----------|----|---------------------------------|--|
| Points | 14 | vs. American, 11-17-15 | 30 vs. Saint Joseph's, 3-7-14 |
| FG | 4 | vs. American, 11-17-15 | 11 2x, Last vs. Saint Joseph's, 3-7-14 |
| FGA | 11 | vs. American, 11-17-15 | 22 vs. Saint Joseph's, 3-7-14 |
| 3FG | 2 | vs. American, 11-17-15 | 4 vs. Dayton, 3-8-15 |
| 3FGA | 6 | vs. American, 11-17-15 | 7 vs. Dayton, 3-8-15 |
| FT | 4 | vs. American, 11-17-15 | 9 vs. Fordham, 3-7-15 |
| FTA | 4 | vs. American, 11-17-15 | 13 vs. Fordham, 3-7-15 |
| Rebounds | 10 | vs. Grambling State, 11-14-15 | 18 3x, Last at VCU, 2-18-15 |
| Assists | 3 | vs. Grambling State, 11-14-15 | 8 vs. St. Bonaventure, 2-15-15 |
| Blocks | 1 | 2x, Last vs. American, 11-17-15 | 6 at VCU, 2-18-15 |
| Steals | 1 | vs. American, 11-17-15 | 3 2x, Last at Richmond, 2-26-15 |
| Minutes | 25 | vs. American, 11-17-15 | 44 vs. Saint Joseph's, 3-7-14 |

CAREER

►Ranks 14th all-time at GW with 642 career rebounds as a Colonial and eighth with 1034 blocks.

2015-16 AS A FRESHMAN

- John R. Wooden Award Preseason Top 30
- Sporting News Preseason All-America First Team
- Atlantic 10 Preseason All-Conference First Team

2014-15 AS A JUNIOR

►2015 Atlantic 10 Player and Defensive Player of the Year ... Fourth player in A-10 history to win both awards in the same year ... GW's seventh Player of the Year and fifth Defensive Player of the Year.

►Honorable Mention All-American by Associated Press and WBCA

►One of 30 midseason candidates for Naismith Trophy

►Atlantic 10 Championship Most Outstanding Player (17.0 ppg, 12.0 rpg, 2.7 bpg) ... Scored game-high 21 points with career-high four 3-pointers in title game, with 16 points in second half, including nine straight in 55 seconds during GW's decisive 18-4 run.

►School-record 375 rebounds

►Averaged 15.3 points and 12.5 rebounds per game ... Only player in A-10 to average a double-double on the year ... Led A-10 and ranked sixth nationally in rebounding ... Ranked sixth in the A-10 in scoring ... League-best 20 double-doubles ranked 10th in NCAA ... Scored in double figures in 29 of 30 games.

►Seven-time A-10 Player of the Week ... USBWA National Player of the Week on Feb. 9 after 18 points/18 rebounds vs. Dayton.

►GW record 10-for-10 FGs for 22 points against Fordham

►Junkanoo Jam Freeport Division MVP in her hometown (18.0 ppg, 11.5 rpg)

►Led the Bahamian National Team to fifth place at the Caribbean Basketball Confederation (CBC) Senior Championship in July, averaging 17.2 points and a tournament-best 14.0 rebounds in five games ... Ranked second in the tournament in scoring and fifth in blocked shots (1.4 bpg).

2013-14 AS A SOPHOMORE

►Atlantic 10 All-Conference Second Team

►Led GW with 14.7 points, 10.9 rebounds and 44 blocks (1.9 bpg) in 23 contests after becoming eligible on Dec. 21 ... Only player in the A-10 to average a double-double on the year.

►Notched a team-high 12 double-doubles and seven 20-point performances ... Led the A-10 with 14 double-figure rebounding games and ranked second with 12 double-doubles.

►Named A-10 Player of the Week on Feb. 3.

►Scored a career-high 30 points and added 16 rebounds against Saint Joseph's in the A-10 Championship quarterfinals (March 7)

2012-13

►Averaged 9.8 points, 10.0 rebounds and 2.1 blocks per game in eight games at Clemson before announcing her intent to transfer ... Shot 48.3 percent from the field...Ranked fourth in the ACC in rebounds and blocks.

HIGH SCHOOL/PERSONAL

►Led Riverdale Baptist to a 35-2 record, a National Christian High School championship and a No. 6 ranking in the POWERADE FAB 50 as a senior ... Ranked as the No. 17 overall prospect and No. 4 post player in her class by ESPN HoopGurlz ... Averaged 15.7 points and 15.6 rebounds per game as a senior ... 2012 Gatorade Maryland Player of the Year, Washington Post All-Met Player of the Year and Gazette Player of the Year ... Selected to play in the 2012 WBCA All-America Game ... McDonald's All-America nominee.

►Believed to be just the third Bahamian girls' basketball player ever to earn a Division I scholarship straight out of high school, following Yolett McPhee-McCuin (FAU/URI) and Waltiea Rolle (UNC).

►Majoring in criminal justice.

JONES GAME-BY-GAME

| OPPONENT | GS | MIN | FG-FGA | 3FG-3FGA | FT-FTA | O | D | REB | PF | A | TO | B | S | PTS |
|-----------------|----|-----|--------|----------|--------|---|---|-----|----|---|----|---|---|-----|
| Grambling St. | * | 22 | 2-7 | 1-3 | 1-2 | 3 | 7 | 10 | 3 | 3 | 3 | 1 | 0 | 6 |
| American | * | 25 | 4-11 | 2-6 | 4-4 | 1 | 6 | 7 | 2 | 2 | 1 | 1 | 1 | 14 |
| #15/10 Stanford | | | | | | | | | | | | | | |
| Fresno State | | | | | | | | | | | | | | |
| Houston | | | | | | | | | | | | | | |
| Iowa | | | | | | | | | | | | | | |
| Wright State | | | | | | | | | | | | | | |
| FGCU | | | | | | | | | | | | | | |
| Memphis | | | | | | | | | | | | | | |
| Villanova | | | | | | | | | | | | | | |
| Iona | | | | | | | | | | | | | | |
| Illinois | | | | | | | | | | | | | | |
| Hartford | | | | | | | | | | | | | | |
| Saint Joseph's | | | | | | | | | | | | | | |
| Rhode Island | | | | | | | | | | | | | | |
| Dayton | | | | | | | | | | | | | | |
| La Salle | | | | | | | | | | | | | | |
| Duquesne | | | | | | | | | | | | | | |
| Massachusetts | | | | | | | | | | | | | | |
| George Mason | | | | | | | | | | | | | | |
| Davidson | | | | | | | | | | | | | | |
| Saint Louis | | | | | | | | | | | | | | |
| Fordham | | | | | | | | | | | | | | |
| Richmond | | | | | | | | | | | | | | |
| Dayton | | | | | | | | | | | | | | |
| St. Bonaventure | | | | | | | | | | | | | | |
| VCU | | | | | | | | | | | | | | |
| Richmond | | | | | | | | | | | | | | |
| George Mason | | | | | | | | | | | | | | |

JONES' CAREER STATISTICS

| Year | GP-GS | Min-Avg | FG-FGA | Pct | 3FG-FGA | Pct | FT-FTA | Pct | Off | Def | Tot | Avg | PF | FO | Ast | TO | Blk | Stl | Pts | Avg |
|--------------|--------------|------------------|----------------|-------------|---------------|-------------|----------------|-------------|------------|------------|------------|-------------|------------|----------|------------|------------|------------|-----------|------------|-------------|
| 2012-13* | 8-4 | 238-29.8 | 28-58 | .483 | 3-10 | .300 | 19-24 | .792 | 25 | 55 | 80 | 10.0 | 20 | 0 | 6 | 16 | 17 | 4 | 78 | 9.8 |
| 2013-14 | 23-23 | 606-26.3 | 140-287 | .488 | 12-41 | .293 | 46-72 | .639 | 88 | 162 | 250 | 10.9 | 65 | 3 | 39 | 94 | 44 | 18 | 338 | 14.7 |
| 2014-15 | 30-30 | 803-26.8 | 185-387 | .478 | 15-49 | .306 | 75-113 | .664 | 128 | 247 | 375 | 12.5 | 68 | 0 | 64 | 84 | 58 | 22 | 460 | 15.3 |
| 2015-16 | 2-2 | 47-23.5 | 6-18 | .333 | 3-9 | .333 | 5-6 | .833 | 4 | 13 | 17 | 8.5 | 5 | 0 | 5 | 4 | 2 | 1 | 20 | 10.0 |
| TOTAL | 63-59 | 1694-26.9 | 359-750 | .479 | 33-109 | .303 | 145-215 | .674 | 245 | 477 | 722 | 11.5 | 158 | 3 | 114 | 198 | 121 | 45 | 896 | 14.2 |

*at Clemson

20 POSTSEASONS IN 25 YEARS | FOUR NCAA SWEET 16s | 1997 ELITE EIGHT



#1 Kelsi Mahoney
Fr. | F | 6-1
Concord, NC



#2 Camila Tapias
So. | G | 5-6
Bogotá, Colombia



#3 Caira Washington
Jr. | F | 6-2
Brandywine, MD



#4 Lauren Chase
Gr. | G | 5-5
Bowie, MD



#5 Aaliyah Brown
Sr. | G | 5-8
League City, TX



#13 Shannon Cranshaw
Jr. | G | 5-9
Ormond Beach, FL



#14 DaLacy Anderson
Sr. | F | 6-1
Bolingbrook, IL



#15 Mia Farmer
So. | G | 5-8
Philadelphia, PA



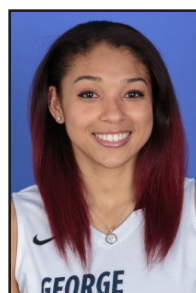
#20 Hannah Schaible
Jr. | G | 5-9
Orlando, FL



#21 Mei-Lyn Bautista
Fr. | G | 5-6
Whitestone, NY



#22 Jada Matthews
So. | F | 6-0
Sicklerville, NJ



#24 Alexis Chandler
Sr. | G | 5-8
Cypress, TX



#25 Kelli Prange
So. | F | 6-5
Damascus, MD



#34 Brianna Cummings
So. | G | 5-10
Lawrenceville, GA



#35 Jonquel Jones
Sr. | F | 6-4
Freeport, Bahamas



Jonathan Tsipis
Head Coach
4th Year | North Carolina '96



Diane Richardson
Assistant Coach
4th Year | Frostburg St. '80



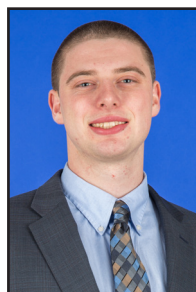
Melissa Dunne
Assistant Coach
2nd Year | Temple '02



Zach Kancher
Assistant Coach
1st Year | George Washington '03



Jillian Baach
Director of Operations
2nd Year | Florida '14



Ryan Phillips
Asst. Director of Operations
2nd Year | Guilford '14

PRONUNCIATION GUIDE

Camila Tapias - cah-MEE-la TAH-pee-ahs
Caira Washington - KYE-rah
Aaliyah Brown - uh-LEE-yuh
DaLacy Anderson - duh-LAY-see
Hannah Schaible - SHY-blee
Mei-Lyn Bautista - MAY-LIN BOW-tee-sta
Kelli Prange - PRANG-ee
Brianna Cummings - bree-anna
Jonquel Jones - jon-KWELL
Jonathan Tsipis - SIP-iss
Melissa Dunne - DUN

2015-16 GW Women's Basketball
George Washington Combined Team Statistics (as of Nov 17, 2015)
All games

| RECORD: | OVERALL | HOME | AWAY | NEUTRAL |
|----------------|----------------|-------------|-------------|----------------|
| ALL GAMES | 2-0 | 2-0 | 0-0 | 0-0 |
| CONFERENCE | 0-0 | 0-0 | 0-0 | 0-0 |
| NON-CONFERENCE | 2-0 | 2-0 | 0-0 | 0-0 |

| # | Player | gp-gs | min | avg | Total | | 3-Point | | F-Throw | | Rebounds | | | | pf | dq | a | to | blk | stl | pts | avg |
|----------------|-------------------|-------|-----|------|--------|-------|---------|-------|---------|-------|----------|-----|-----|------|----|----|----|----|-----|-----|-----|------|
| | | | | | fg-fga | fg% | 3fg-fga | 3fg% | ft-fa | ft% | off | def | tot | avg | | | | | | | | |
| 03 | WASHINGTON, Caira | 2-2 | 47 | 23.5 | 20-30 | .667 | 0-0 | .000 | 4-7 | .571 | 10 | 9 | 19 | 9.5 | 5 | 0 | 2 | 3 | 4 | 1 | 44 | 22.0 |
| 25 | PRANGE, Kelli | 2-2 | 47 | 23.5 | 11-19 | .579 | 2-4 | .500 | 6-8 | .750 | 4 | 9 | 13 | 6.5 | 2 | 0 | 2 | 3 | 2 | 1 | 30 | 15.0 |
| 35 | JONES, Jonquel | 2-2 | 47 | 23.5 | 6-18 | .333 | 3-9 | .333 | 5-6 | .833 | 4 | 13 | 17 | 8.5 | 5 | 0 | 5 | 4 | 2 | 1 | 20 | 10.0 |
| 13 | CRANSHAW, Shanno | 2-2 | 47 | 23.5 | 5-9 | .556 | 5-8 | .625 | 1-2 | .500 | 1 | 2 | 3 | 1.5 | 1 | 0 | 4 | 3 | 0 | 3 | 16 | 8.0 |
| 34 | CUMMINGS, Brianna | 2-0 | 31 | 15.5 | 5-11 | .455 | 0-1 | .000 | 2-4 | .500 | 3 | 3 | 6 | 3.0 | 2 | 0 | 4 | 3 | 1 | 3 | 12 | 6.0 |
| 21 | BAUTISTA, Mei-Lyn | 1-0 | 9 | 9.0 | 2-2 | 1.000 | 1-1 | 1.000 | 0-0 | .000 | 0 | 1 | 1 | 1.0 | 1 | 0 | 1 | 1 | 0 | 0 | 5 | 5.0 |
| 14 | ANDERSON, DaLacy | 2-0 | 14 | 7.0 | 4-7 | .571 | 1-1 | 1.000 | 0-4 | .000 | 2 | 1 | 3 | 1.5 | 0 | 0 | 1 | 2 | 0 | 0 | 9 | 4.5 |
| 15 | FARMER, Mia | 2-0 | 18 | 9.0 | 2-6 | .333 | 2-5 | .400 | 0-0 | .000 | 0 | 1 | 1 | 0.5 | 0 | 0 | 1 | 0 | 0 | 1 | 6 | 3.0 |
| 04 | CHASE, Lauren | 2-2 | 49 | 24.5 | 3-9 | .333 | 0-0 | .000 | 0-0 | .000 | 0 | 6 | 6 | 3.0 | 2 | 0 | 8 | 11 | 0 | 4 | 6 | 3.0 |
| 05 | BROWN, Aaliyah | 2-0 | 24 | 12.0 | 1-4 | .250 | 1-4 | .250 | 2-3 | .667 | 0 | 2 | 2 | 1.0 | 5 | 0 | 2 | 1 | 0 | 1 | 5 | 2.5 |
| 24 | CHANDLER, Alexis | 2-0 | 35 | 17.5 | 2-6 | .333 | 0-0 | .000 | 0-0 | .000 | 5 | 7 | 12 | 6.0 | 2 | 0 | 3 | 4 | 0 | 2 | 4 | 2.0 |
| 22 | MATTHEWS, Jada | 2-0 | 14 | 7.0 | 1-3 | .333 | 0-1 | .000 | 2-2 | 1.000 | 2 | 2 | 4 | 2.0 | 2 | 0 | 0 | 3 | 0 | 0 | 4 | 2.0 |
| 01 | MAHONEY, Kelsi | 2-0 | 7 | 3.5 | 1-3 | .333 | 0-2 | .000 | 0-0 | .000 | 1 | 1 | 2 | 1.0 | 2 | 0 | 0 | 0 | 0 | 0 | 2 | 1.0 |
| 02 | TAPIAS, Camila | 2-0 | 11 | 5.5 | 0-3 | .000 | 0-2 | .000 | 0-0 | .000 | 0 | 1 | 1 | 0.5 | 0 | 0 | 1 | 0 | 0 | 0 | 0 | 0.0 |
| Team | | | | | | | | | | | 2 | 7 | 9 | | | | | | | | | |
| Total..... | | 2 | 400 | | 63-130 | .485 | 15-38 | .395 | 22-36 | .611 | 34 | 65 | 99 | 49.5 | 29 | 0 | 34 | 38 | 9 | 17 | 163 | 81.5 |
| Opponents..... | | 2 | 400 | | 44-120 | .367 | 3-19 | .158 | 15-31 | .484 | 16 | 38 | 54 | 27.0 | 34 | 0 | 21 | 36 | 4 | 23 | 106 | 53.0 |

| TEAM STATISTICS | GW | OPP | Date | Opponent | Score | Att. |
|------------------------|-----------|------------|---------------------|-----------------|--------------|-------------|
| SCORING | 163 | 106 | 11/14/15 | GRAMBLING STATE | w 85-58 | 885 |
| Points per game | 81.5 | 53.0 | 11/17/15 | AMERICAN | w 78-48 | 785 |
| Scoring margin | +28.5 | - | * - Conference game | | | |
| FIELD GOALS-ATT | 63-130 | 44-120 | | | | |
| Field goal pct | .485 | .367 | | | | |
| 3 POINT FG-ATT | 15-38 | 3-19 | | | | |
| 3-point FG pct | .395 | .158 | | | | |
| 3-pt FG made per game | 7.5 | 1.5 | | | | |
| FREE THROWS-ATT | 22-36 | 15-31 | | | | |
| Free throw pct | .611 | .484 | | | | |
| F-Throws made per game | 11.0 | 7.5 | | | | |
| REBOUNDS | 99 | 54 | | | | |
| Rebounds per game | 49.5 | 27.0 | | | | |
| Rebounding margin | +22.5 | - | | | | |
| ASSISTS | 34 | 21 | | | | |
| Assists per game | 17.0 | 10.5 | | | | |
| TURNOVERS | 38 | 36 | | | | |
| Turnovers per game | 19.0 | 18.0 | | | | |
| Turnover margin | -1.0 | - | | | | |
| Assist/turnover ratio | 0.9 | 0.6 | | | | |
| STEALS | 17 | 23 | | | | |
| Steals per game | 8.5 | 11.5 | | | | |
| BLOCKS | 9 | 4 | | | | |
| Blocks per game | 4.5 | 2.0 | | | | |
| ATTENDANCE | 1670 | 0 | | | | |
| Home games-Avg/Game | 2-835 | 0-0 | | | | |
| Neutral site-Avg/Game | - | 0-0 | | | | |

| Score by Periods | 1st | 2nd | 3rd | 4th | Totals |
|-------------------------|------------|------------|------------|------------|---------------|
| George Washington | 53 | 30 | 50 | 30 | 163 |
| Opponents | 25 | 19 | 28 | 34 | 106 |

2015-16 GW Women's Basketball
George Washington Team Game-by-Game (as of Nov 19, 2015)
All games

TEAM STATISTICS

| Opponent | Date | Score | | Total | | 3-Pointers | | Free throws | | Rebounds | | | | pf | a | t/o | blk | stl | pts | avg |
|-------------------|----------|-------|---|--------|------|------------|------|-------------|------|----------|-----|-----|------|----|----|-----|-----|-----|-----|------|
| | | | | fg-fga | pct | 3fg-fga | pct | ft-fta | pct | off | def | tot | avg | | | | | | | |
| GRAMBLING STATE | 11/14/15 | 85-58 | W | 34-73 | .466 | 10-20 | .500 | 7-11 | .636 | 25 | 29 | 54 | 54.0 | 14 | 17 | 23 | 6 | 9 | 85 | 85.0 |
| AMERICAN | 11/17/15 | 78-48 | W | 29-57 | .509 | 5-18 | .278 | 15-25 | .600 | 9 | 36 | 45 | 49.5 | 15 | 17 | 15 | 3 | 8 | 78 | 81.5 |
| George Washington | | 163 | | 63-130 | .485 | 15-38 | .395 | 22-36 | .611 | 34 | 65 | 99 | 49.5 | 29 | 34 | 38 | 9 | 17 | 163 | 81.5 |
| Opponents | | 106 | | 44-120 | .367 | 3-19 | .158 | 15-31 | .484 | 16 | 38 | 54 | 27.0 | 34 | 21 | 36 | 4 | 23 | 106 | 53.0 |

Games played: 2
Points/game: 81.5
FG Pct: 48.5
3FG Pct: 39.5
FT Pct: 61.1

Rebounds/game: 49.5
Assists/game: 17.0
Turnovers/game: 19.0
Assist/turnover ratio: 0.9
Steals/game: 8.5
Blocks/game: 4.5

2015-16 GW Women's Basketball
George Washington Team Game-by-Game Comparison (as of Nov 19, 2015)
All games

| Opponent | 1st | 2nd | Score | Mar | Total FG | FG Pct | 3-Pointers | 3FG Pct | Free Throws | FT Pct | Rebounds | Assist | T/Over | Block | Steal | Fouls |
|-----------------|-------|-------|-------|-----|-------------|-----------|------------|-----------|-------------|-----------|-----------|--------|--------|-------|-------|-------|
| GRAMBLING STATE | 49/26 | 36/32 | 85-58 | +27 | 34-73/25-65 | .466/.385 | 10-20/2-12 | .500/.167 | 7-11/6-13 | .636/.462 | 54/29 +25 | 17/11 | 23/20 | 6/4 | 9/18 | 14/16 |
| AMERICAN | 34/18 | 44/30 | 78-48 | +30 | 29-57/19-55 | .509/.345 | 5-18/1-7 | .278/.143 | 15-25/9-18 | .600/.500 | 45/25 +20 | 17/10 | 15/16 | 3/0 | 8/5 | 15/18 |

Note: Game totals are displayed in the format TEAM/OPPONENT for each category

2015-16 GW Women's Basketball
George Washington Game-by-Game Highs (as of Nov 19, 2015)
All games

| Opponent | Date | Score | Points | Rebounds | Assists | Steals | Blocked shots |
|-----------------|----------|-------|------------------|-------------------|--|---|--|
| GRAMBLING STATE | 11/14/15 | 85-58 | 23-WASHINGTON, C | 10-JONES, Jonquel | 3-CUMMINGS, Brian CHASE, Lauren JONES, Jonquel | 2-CRANSHAW, Shan CUMMINGS, Briann CHASE, Lauren | 3-WASHINGTON, Ca |
| AMERICAN | 11/17/15 | 78-48 | 21-WASHINGTON, C | 11-WASHINGTON, C | 5-CHASE, Lauren | 2-CHASE, Lauren | 1-WASHINGTON, Ca JONES, Jonquel CUMMINGS, Briann |

2015-16 GW Women's Basketball
George Washington Points-Rebounds-Assists (as of Nov 19, 2015)
All games

| Opponent | Date | Score | | 01 MAHONEY,KE | 02 TAPIAS,CAM | 03 WASHINGTON | 04 CHASE,LAUR | 05 BROWN,AALI | 13 CRANSHAW,S | 14 ANDERSON,D |
|-----------------|----------|-------|---|------------------|------------------|------------------|------------------|------------------|------------------|------------------|
| GRAMBLING STATE | 11/14/15 | 85-58 | w | 2-1-0 | 0-1-1 | 23-8-0 | 4-4-3 | 3-1-1 | 15-1-1 | 2-1-1 |
| AMERICAN | 11/17/15 | 78-48 | w | 0-1-0 | 0-0-0 | 21-11-2 | 2-2-5 | 2-1-1 | 1-2-3 | 7-2-0 |

| Opponent | Date | Score | | 15 FARMER,MIA | 21 BAUTISTA,M | 22 MATTHEWS,J | 24 CHANDLER,A | 25 PRANGE,KEL | 34 CUMMINGS,B | 35 JONES,JONQ |
|-----------------|----------|-------|---|------------------|------------------|------------------|------------------|------------------|------------------|------------------|
| GRAMBLING STATE | 11/14/15 | 85-58 | w | 6-1-0 | DNP | 2-4-0 | 2-9-2 | 12-7-2 | 8-3-3 | 6-10-3 |
| AMERICAN | 11/17/15 | 78-48 | w | 0-0-1 | 5-1-1 | 2-0-0 | 2-3-1 | 18-6-0 | 4-3-1 | 14-7-2 |